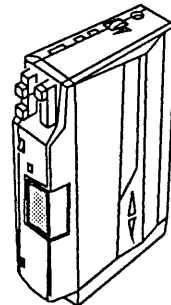


AIWA®

HS-P202MII HS-PC202MII/PC203

SERVICE MANUAL



STEREO CASSETTE PLAYER

• BASIC TAPE MECHANISM : $\alpha-1$

• TYPE. Y (P202M II, PC202M II)
U (PC203)

SPECIFICATIONS

Maximum output: 15mW+15mW (EIAJ/32 Ω)
20mW+20mW (EIAJ/16 Ω)

Power source: Battery DC 2V, rechargeable lead battery (AIWA) $\times 1$
Battery DC 3V, LR-03 (UM-4, AAA, R03) $\times 2$
Domestic AC power (using optional AC adaptor)

Battery life: Rechargeable lead battery (AIWA)
Approx. 4 hours (EIAJ, PB 1mW/1hour recharging)
Alkaline batteries (LR-03, AAA)
Approx. 8 hours (EIAJ, PB 1mW)

<AC adaptor> (HS-PC203 only)

Rated voltage: AC-205U, C AC120V

Rated input: 10VA 50/60Hz

Usable batteries: AIWA rechargeable lead battery (PB-3)

Rated output: DC 2V 30mA

- Design and specifications are subject to change without notice.
- Noise reduction system manufactured under license from Dolby Laboratories Licensing Corporation.
- "Dolby", the double-D symbol are trademarks of Dolby Laboratories Licensing Corporation.

AIWA Co., Ltd.

Tokyo Japan

Printed in Japan

DISASSEMBLY INSTRUCTIONS

1. "Cassette Lid" Removal (See Figure 1)

- 1) Remove 3 screws.
(A × 2, B × 1)
- 2) Lift up the "Cassette lid" in the direction of the arrow and unlock the "Holder, Cassette".

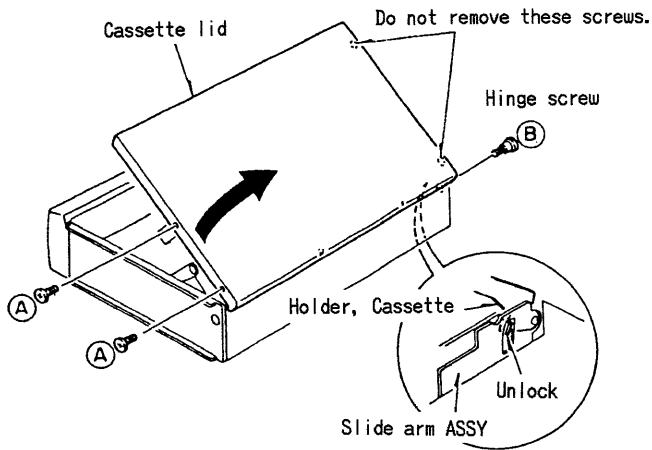


Fig. 1

Caution) When the screw shown in the figure below is removed, the "Lock, Cassette" drops. (See Figure 2)

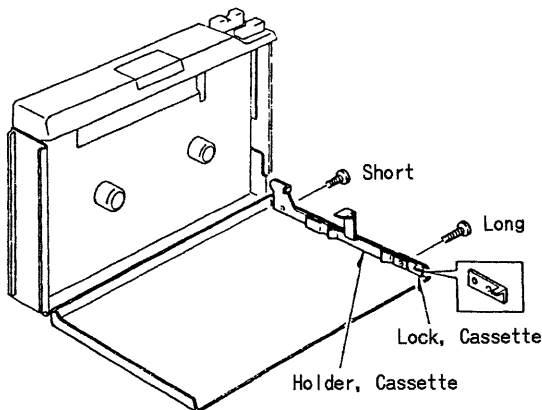


Fig. 2

2. "Rear Cabinet" and "Panel, Control" Removal (See Figure 3)

- 1) Remove the "Cassette lid". (See Figure 1)
- 2) Remove 5 screws.
(C × 2, D (short) × 2, E (long) × 1)
- 3) Insert a flat-head screwdriver as shown in the figure and release the hook while pressing the "Panel, Control".
- 4) Remove the "Rear cabinet" in the direction of arrow ① and the "Panel, Control" in the direction of arrow ②.

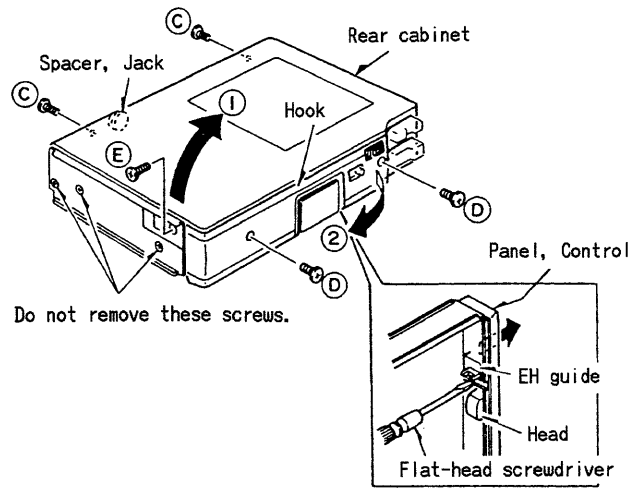


Fig. 3

Note: Caution when reinstalling

● "Knob, Direction"

Insert the tip of the knob into the concave section (□). (See Figure 4)

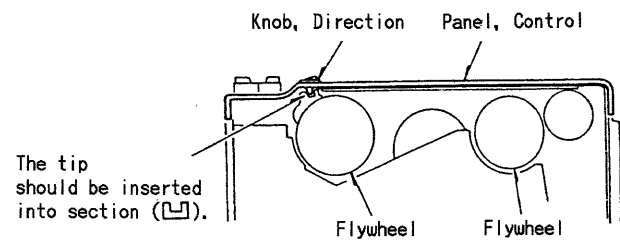


Fig. 4

● "Knob slides A" and "B"

Be carefull in the installation direction.
(See Figure 5)

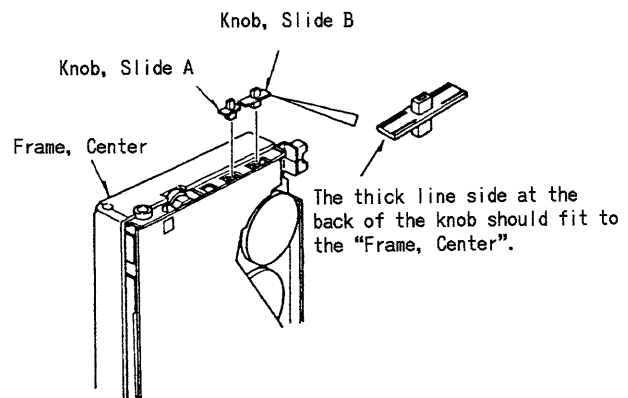


Fig. 5

3. "Frame, Center" Removal (See Figure 6)

- 1) Remove 3 screws and pull out the "Frame, Center" in the direction of the arrow.

((F) (short) × 1, (G) (long) × 1, (H) × 1)

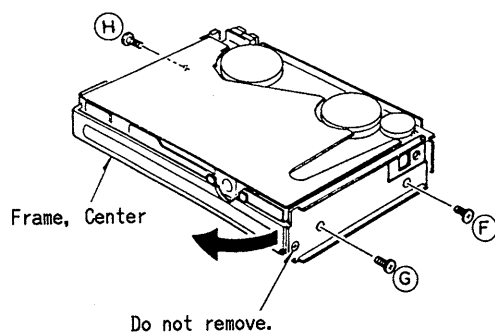


Fig. 6

4. "Main Circuit Board" Removal (See Figure 7)

- 1) Remove 2 screws and lift up the "Main Circuit Board" in the direction of the arrow.

((I) × 2)

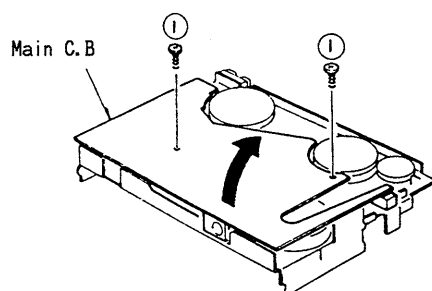


Fig. 7

- 2) Extend the "Motor wires" and "FR switch wire" and turn over the circuit board by 180°.

Note-1: When reinstalling the circuit board, lay out the wires correctly so they do not touch the "Motor pulley", etc. Check that the "Earth spring" for the circuit board is in place. (See Figure 8)

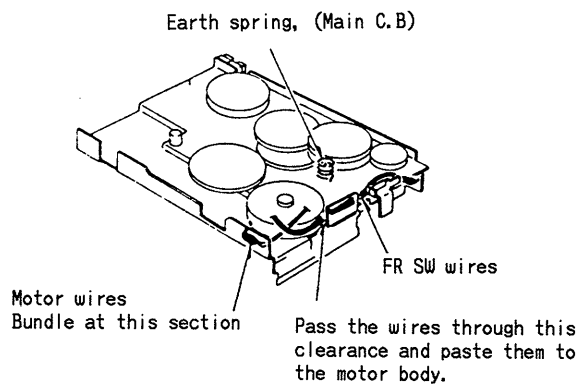


Fig. 8

Note-2: During checking, connect a "Shorting clip", etc. between the circuit board and mechanism as shown in the figure for grounding. (See Figure 9)

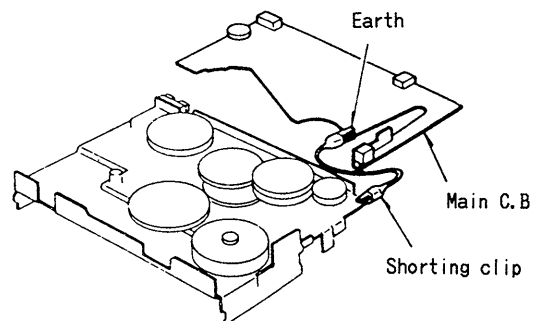


Fig. 9

5. "Button, PLAY" Removal (See Figure 10)

- 1) Remove the "Panel, Control" and "Rear cabinet".
- 2) Move the "Button, PLAY" in the direction of arrow A by 1.5mm to release the lock and pull it up in the direction of arrow B to remove it.

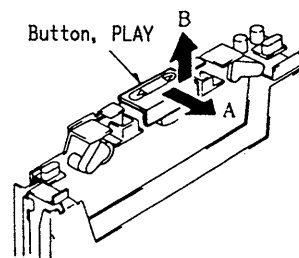


Fig. 10

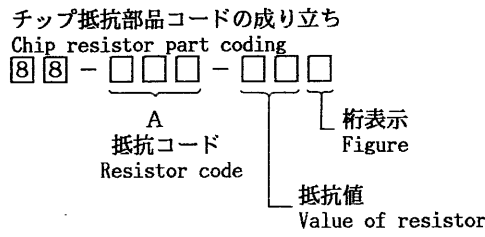
ELECTRICAL MAIN PARTS LIST (HS — P202M II)

REF.NO.	PART NO.	DESCRIPTION	REF.NO.	PART NO.	DESCRIPTION
--- IC ---			C47	★87-010-174-010	CAP,CHIP S 470P
	87-001-351-010	IC,AN6612S	C48	★87-010-174-010	CAP,CHIP S 470P
	87-020-224-010	IC,NJM2063N	C49	★87-010-452-010	CAP,CHIP 1U
	87-020-670-010	IC,TA8115F	C50	★87-010-452-010	CAP,CHIP 1U
--- TRANSISTOR ---			C51	★87-010-452-010	CAP,CHIP 1U
	89-112-134-010	TRANSISTOR,2SA1213Y	C52	★87-010-198-010	CAP,CHIP 0.022
	89-327-125-010	TRANSISTOR,2SC2712 GR	C53	★87-010-198-010	CAP,CHIP 0.022
	89-333-266-010	TRANSISTOR,2SC3326B	C54	★87-010-452-010	CAP,CHIP 1U
	87-026-431-010	TRANSISTOR,FMC2	C55	★87-015-934-010	CAP,CHIP TANTALUM 2.2-4
	87-026-298-010	TRANSISTOR,FMW1	C56	★87-015-934-010	CAP,CHIP TANTALUM 2.2-4
--- DIODE ---			C57	★87-015-934-010	CAP,CHIP TANTALUM 2.2-4
	87-020-339-010	DIODE,CHIP 1SS226	C58	★87-015-933-010	CAP,CHIP TANTALUM 1-10
--- MAIN CIRCUIT BOARD SECTION ---			C59	★87-015-934-010	CAP,CHIP TANTALUM 2.2-4
C1	★87-010-175-010	CAP,CHIP S 560P SL	C60	★87-015-933-010	CAP,CHIP TANTALUM 1-10
C2	★87-010-175-010	CAP,CHIP S 560P SL	C61	★87-010-184-010	CAP,CHIP 3300P
C3	★87-010-175-010	CAP,CHIP S 560P SL	C62	★87-010-184-010	CAP,CHIP 3300P
C4	★87-010-175-010	CAP,CHIP S 560P SL	J1	87-049-724-010	JACK 3.5(PHONES)
C5	★87-010-587-010	CAP,ELECT 100-2	J2	87-049-859-010	JACK DC(DC2V)
C6	★87-010-114-010	CAP,ELECT 47-4	LED1	87-001-214-010	LED SLP-190 B-51(OPE/BATT)
C7	★87-010-114-010	CAP,ELECT 47-4	R72	★87-022-042-010	RES,CHIP MF 0.51-1/8
C8	★87-010-198-010	CAP,CHIP 0.022	R73	★87-022-043-010	RES,CHIP MF 8.2K-1/8
C9	★87-010-198-010	CAP,CHIP 0.022	S1	87-036-083-010	PUSH SW(POWER)
C10	★87-010-452-010	CAP,CHIP 1U	S2	87-036-048-010	SLIDE SW(TAPE)
C11	★87-010-452-010	CAP,CHIP 1U	S3	87-036-048-010	SLIDE SW(DOLBY NR)
C12	★87-010-198-010	CAP,CHIP 0.022	S4	87-036-049-010	SLIDE SW(DSL)
C13	★87-010-198-010	CAP,CHIP 0.022	SFR1	★87-024-074-010	SFR 200
C14	★87-012-142-010	CAP,CHIP S 0.33	SFR2	★87-024-074-010	SFR 200
C15	★87-010-452-010	CAP,CHIP 1U	SP11	87-026-248-010	PHOTO SENSOR ON2270Q2
C16	★87-010-452-010	CAP,CHIP 1U	VR1	87-024-089-010	VR 20KA(VOLUME)
C17	★87-010-082-010	CAP,ELECT 220-4	--- F/R SW CIRCUIT BOARD SECTION ---		
C18	★87-010-226-010	CAP,CHIP TANTALUM 47-4	S5	86-541-602-010	SLIDE SW(F/R,MUTE)
C19	★87-010-589-010	CAP,ELECT 330-2	--- MOTOR CIRCUIT BOARD SECTION ---		
C20	★87-010-589-010	CAP,ELECT 330-2	SFR3	★87-024-138-010	SFR 1K
C21	★87-010-419-010	CAP,ELECT 4.7-16 SRE	TM1	★84-435-246-010	CONNECTOR ASSY 1.4(BATT.TERMINAL)
C22	★87-010-076-010	CAP,ELECT H5 22U-6.3V	--- HEAD CIRCUIT BOARD SECTION ---		
C23	★87-012-141-010	CAP,CHIP S 0.22	PCB-D	84-463-605-010	PH ASSY (W/PCB-D)
C24	★87-010-082-010	CAP,ELECT 220-4	PH	84-463-303-010	HEAD FLEXIBLE CIRCUIT BOARD
C25	★87-010-452-010	CAP,CHIP 1U		87-046-311-010	PB HEAD,A-352
C26	★87-010-188-010	CAP,CHIP 6800P	--- MISCELLANEOUS ---		
C27	★87-010-188-010	CAP,CHIP 6800P	C1	★84-439-620-010	CAP,ELECT 470-4V
C28	★87-010-194-010	CAP,CHIP 0.047	M1	87-045-283-010	MOTOR FM11
C29	★87-010-194-010	CAP,CHIP 0.047			
C30	★87-010-193-010	CAP,CHIP 0.033			
C31	★87-010-193-010	CAP,CHIP 0.033			
C32	★87-010-214-010	CAP,CHIP TANTALUM 0.68-16			
C33	★87-010-214-010	CAP,CHIP TANTALUM 0.68-16			
C34	★87-010-186-010	CAP,CHIP 4700P			
C35	★87-010-186-010	CAP,CHIP 4700P			
C36	★87-010-114-010	CAP,ELECT 47-4			
C37	★87-010-452-010	CAP,CHIP 1U			
C38	★87-010-452-010	CAP,CHIP 1U			
C39	★87-010-452-010	CAP,CHIP 1U			
C40	★87-010-082-010	CAP,ELECT 220-4			
C41	★87-010-452-010	CAP,CHIP 1U			
C42	★87-010-452-010	CAP,CHIP 1U			
C43	★87-010-194-010	CAP,CHIP 0.047			
C44	★87-010-194-010	CAP,CHIP 0.047			
C45	★87-010-194-010	CAP,CHIP 0.047			
C46	★87-010-194-010	CAP,CHIP 0.047			

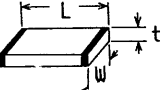
ELECTRICAL MAIN PARTS LIST (HS — PC202M II / PC203)

REF.NO.	PART NO.	DESCRIPTION	REF.NO.	PART NO.	DESCRIPTION
--- IC ---			C48	*87-010-587-010	CAP,ELECT 100-2
	87-001-351-010	IC,AN6612S	C49	*87-015-934-010	CAP,CHIP TANTALUM 2.2-4
	87-020-955-010	IC,NJM2065M	C50	*87-015-934-010	CAP,CHIP TANTALUM 2.2-4
	87-020-670-010	IC,TA8115F	C51	*87-015-934-010	CAP,CHIP TANTALUM 2.2-4
--- TRANSISTOR ---			C52	*87-015-933-010	CAP,CHIP TANTALUM 1-10
	89-112-134-010	TRANSISTOR,2SA1213Y	C53	*87-015-934-010	CAP,CHIP TANTALUM 2.2-4
	89-327-125-010	TRANSISTOR,2SC2712 GR	C54	*87-012-141-010	CAP,CHIP S 0.22
	89-333-266-010	TRANSISTOR,2SC3326B	C55	*87-010-587-010	CAP,ELECT 100-2
	87-026-356-010	TRANSISTOR,FMC1	C56	*87-015-933-010	CAP,CHIP TANTALUM 1-10
	87-026-431-010	TRANSISTOR,FMC2	J1	87-049-724-010	JACK 3.5(BLACK)(PHONES)
--- DIODE ---			J2	87-049-859-010	JACK DC(DC2V)
	87-020-339-010	DIODE,CHIP 1SS226	L1	*84-463-607-010	COIL CHIP 11.5MMH
--- MAIN CIRCUIT BOARD SECTION ---			L2	*84-463-607-010	COIL CHIP 11.5MMH
C1	*87-010-176-010	CAP,CHIP 680P	LED1	87-001-214-010	LED SLP-190 B-51(OPE/BATT)
C2	*87-010-176-010	CAP,CHIP 680P	R61	*87-022-043-010	RES,CHIP MF 8.2K-1/8
C3	*87-010-176-010	CAP,CHIP 680P	R62	*87-022-042-010	RES,CHIP MF 0.51-1/8
C4	*87-010-176-010	CAP,CHIP 680P	S1	87-036-083-010	PUSH SW(POWER)
C5	*87-010-114-010	CAP,ELECT 47-4	S2	87-036-048-010	SLIDE SW(TAPE)
C6	*87-010-114-010	CAP,ELECT 47-4	S3	87-036-049-010	SLIDE SW(DOLBY NR)
C7	*87-010-198-010	CAP,CHIP 0.022	SFR1	*87-024-074-010	SFR 200
C8	*87-010-198-010	CAP,CHIP 0.022	SFR2	*87-024-074-010	SFR 200
C9	*87-010-450-010	CAP,CHIP 0.47U	SPI1	87-026-248-010	PHOTO SENSOR ON2270Q2
C10	*87-010-450-010	CAP,CHIP 0.47U	VR1	87-024-089-010	VR 20KA(VOLUME)
C11	*87-010-198-010	CAP,CHIP 0.022	--- F/R SWITCH CIRCUIT BOARD SECTION ---		
C12	*87-010-198-010	CAP,CHIP 0.022	S4	86-541-602-010	SLIDE SW(F/R,MUTE)
C13	*87-010-452-010	CAP,CHIP 1U	--- MOTOR CIRCUIT BOARD SECTION ---		
C14	*87-010-452-010	CAP,CHIP 1U	SFR3	*87-024-138-010	SFR 1K
C15	*87-010-588-010	CAP,ELECT 220-2	TM1	*84-435-246-010	CONNECTOR ASSY 1.4(BATT.TERMINAL)
C16	*87-010-588-010	CAP,ELECT 220-2	--- HEAD CIRCUIT BOARD SECTION ---		
C17	*87-012-142-010	CAP,CHIP S 0.33	84-463-605-010	PH ASSY (W/PCB-D)	
C18	*87-010-226-010	CAP,CHIP TANTALUM 47-4	PCB-D	84-463-303-010	HEAD FLEXIBLE CIRCUIT BOARD
C19	*87-010-082-010	CAP,ELECT 220-4	PH	87-046-311-010	PB HEAD,A-352
C20	*87-010-076-010	CAP,ELECT 22U-6.3V	--- MISCELLANEOUS ---		
C21	*87-010-419-010	CAP,ELECT 4.7/16SRE	C1	*84-439-620-010	CAP,ELECT 470-4V
C22	*87-010-452-010	CAP,CHIP 1U	M1	87-045-283-010	MOTOR FM11
C23	*87-010-450-010	CAP,CHIP 0.47U			
C24	*87-010-450-010	CAP,CHIP 0.47U			
C25	*87-010-194-010	CAP,CHIP 0.047			
C26	*87-010-194-010	CAP,CHIP 0.047			
C27	*87-015-934-010	CAP,CHIP TANTALUM 2.2-4			
C28	*87-015-934-010	CAP,CHIP TANTALUM 2.2-4			
C29	*87-012-141-010	CAP,CHIP S 0.22			
C30	*87-012-141-010	CAP,CHIP S 0.22			
C31	*87-012-141-010	CAP,CHIP S 0.22			
C32	*87-012-141-010	CAP,CHIP S 0.22			
C33	*87-015-934-010	CAP,CHIP TANTALUM 2.2-4			
C34	*87-015-934-010	CAP,CHIP TANTALUM 2.2-4			
C35	*87-010-187-010	CAP,CHIP S 5600P			
C36	*87-010-187-010	CAP,CHIP S 5600P			
C37	*87-010-168-010	CAP,CHIP S 150P			
C38	*87-010-168-010	CAP,CHIP S 150P			
C39	*87-010-187-010	CAP,CHIP S 5600P			
C40	*87-010-187-010	CAP,CHIP S 5600P			
C41	*87-010-197-010	CAP,CHIP 0.01BK			
C42	*87-010-197-010	CAP,CHIP 0.01BK			
C43	*87-010-187-010	CAP,CHIP S 5600P			
C44	*87-010-187-010	CAP,CHIP S 5600P			
C45	*87-010-424-010	CAP,CHIP TANTALUM 4.7-4			
C46	*87-010-424-010	CAP,CHIP TANTALUM 4.7-4			
C47	*87-010-082-010	CAP,ELECT 220-4			

○チップ抵抗部品コード／CHIP RESISTOR PART CODE



チップ抵抗
Chip resistor

Wattage 容量	Type 種類	Tolerance 許容誤差	Symbol 記号	Dimensions/寸法(mm)				Resistor Code : A 抵抗コード : A
				Form/外形	L	W	t	
1/32W	1608	±5%	CJ		1.6	0.8	0.35	108
1/10W	2125	±5%	CJ		2	1.25	1.45	118
1/8W	3216	±5%	CJ		3.2	1.6	0.5 ~0.7	128

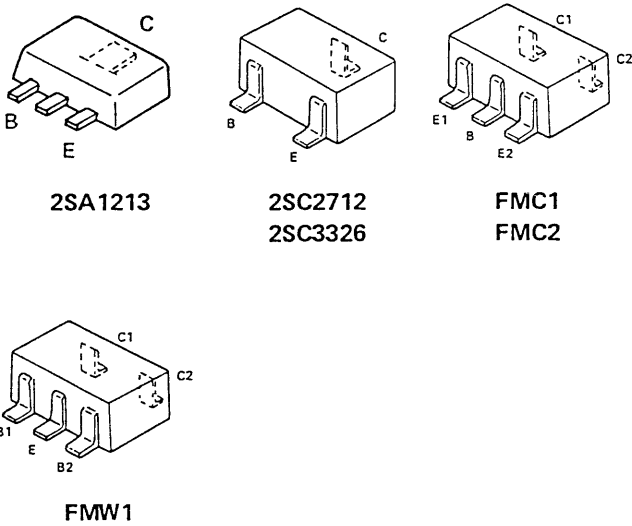
PRACTICAL SERVICE FIGURE

HS-P202MⅡ

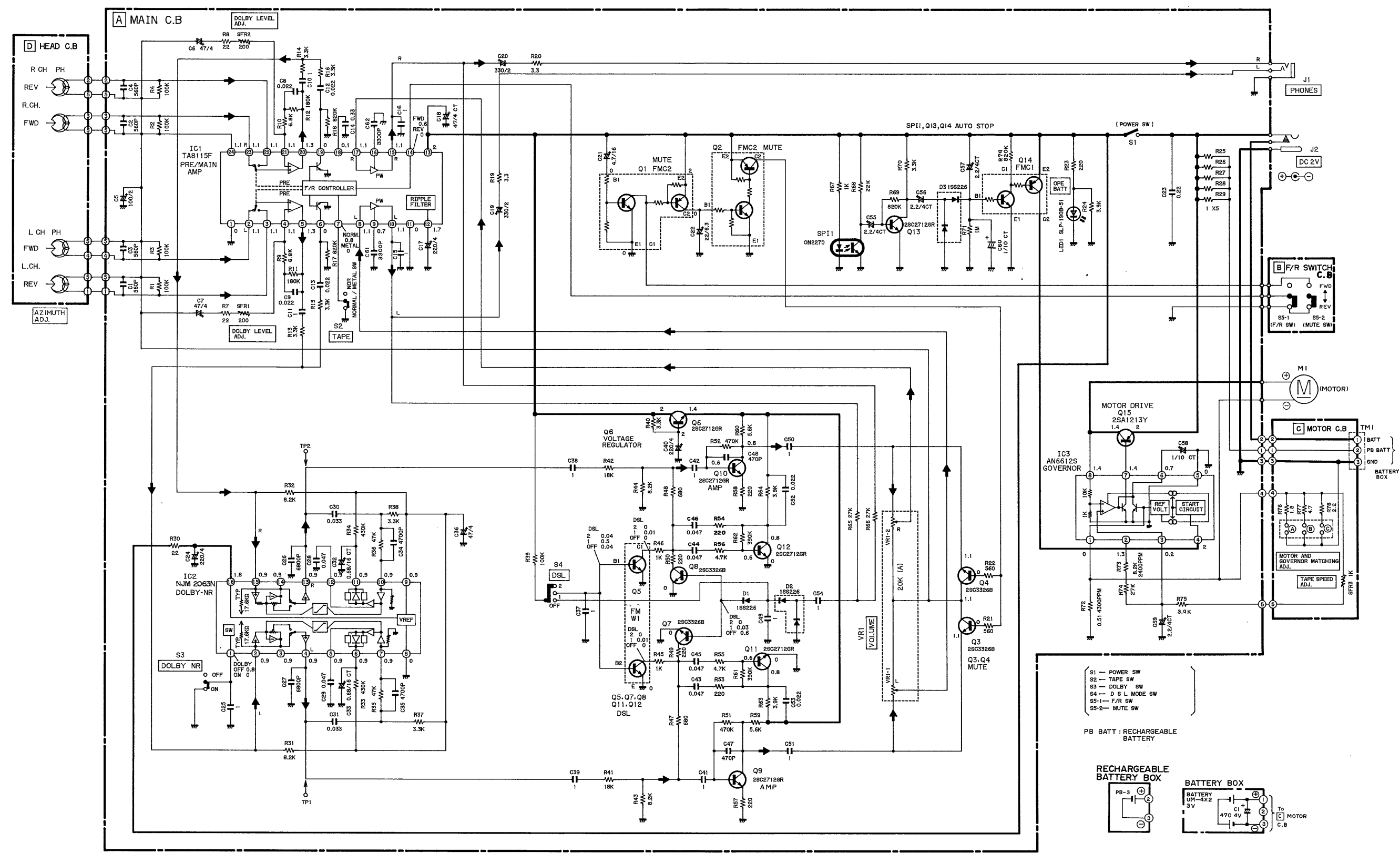
- Distortion : Less than 3 %
- Signal to noise ratio : 50 ± 5 dB (DC)
- Noise level : Less than 3.5 mV (DC VOL MAX.)
- Frequency response : 63 Hz ~ 8 kHz ± 3.5 dB
- Wow & Flutter : Less than 0.45 % (FWD)
Less than 0.48 % (REV)
- Pinch roller pressure : 135 ± 15 g
- Take up torque : FWD 30 ± 7.5 g-cm
REV 30 ± 7.5 g-cm
- F.F/Rewind torque : 100 ± 25 g-cm

HS-PC202MⅡ/PC203

- Distortion : Less than 2 %
- Signal to noise ratio : 50 ± 5 dB (DC)
- Noise level : Less than 3.5 mV (DC VOL MAX.)
- Frequency response : 63 Hz ~ 8 kHz ± 3.5 dB
- Wow & Flutter : Less than 0.45 % (FWD)
Less than 0.48 % (REV)
- Pinch roller pressure : 135 ± 15 g
- Take up torque : FWD 30 ± 7.5 g-cm
REV 30 ± 7.5 g-cm
- F.F/Rewind torque : 100 ± 25 g-cm

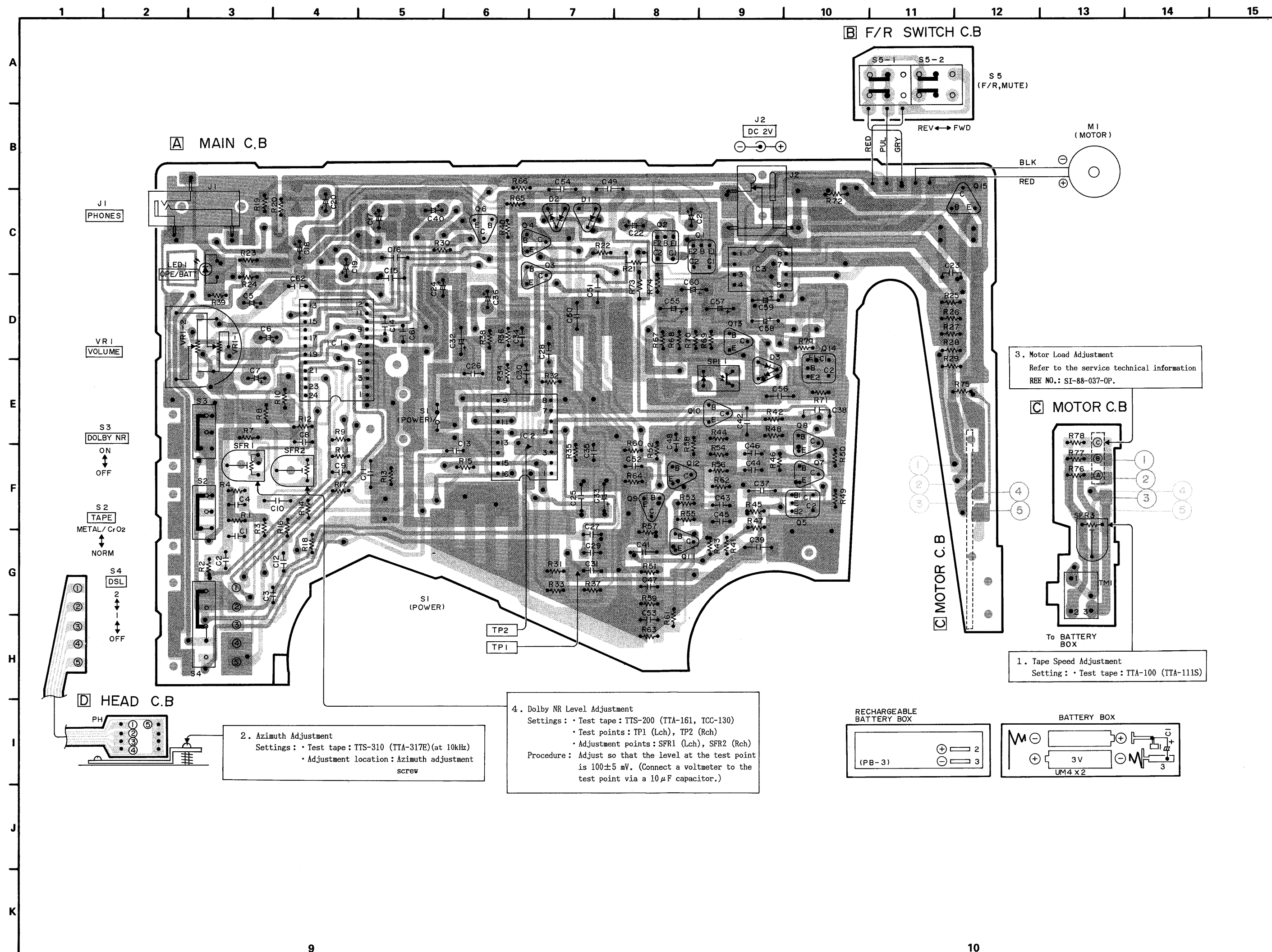


SCHEMATIC DIAGRAM (HS — P202M II)



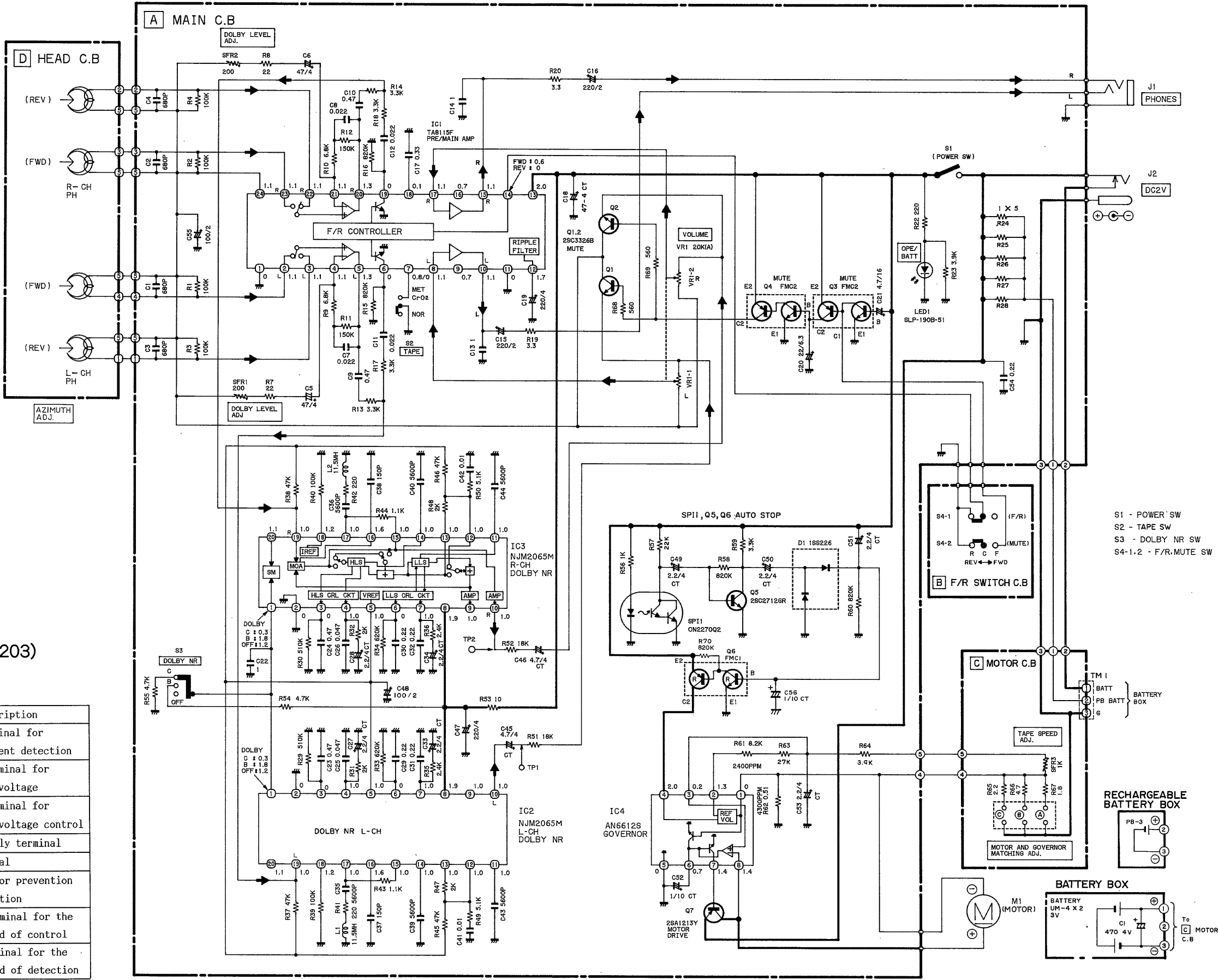
IC DESCRIPTION (HS — P202M II)
IC,AN6612S

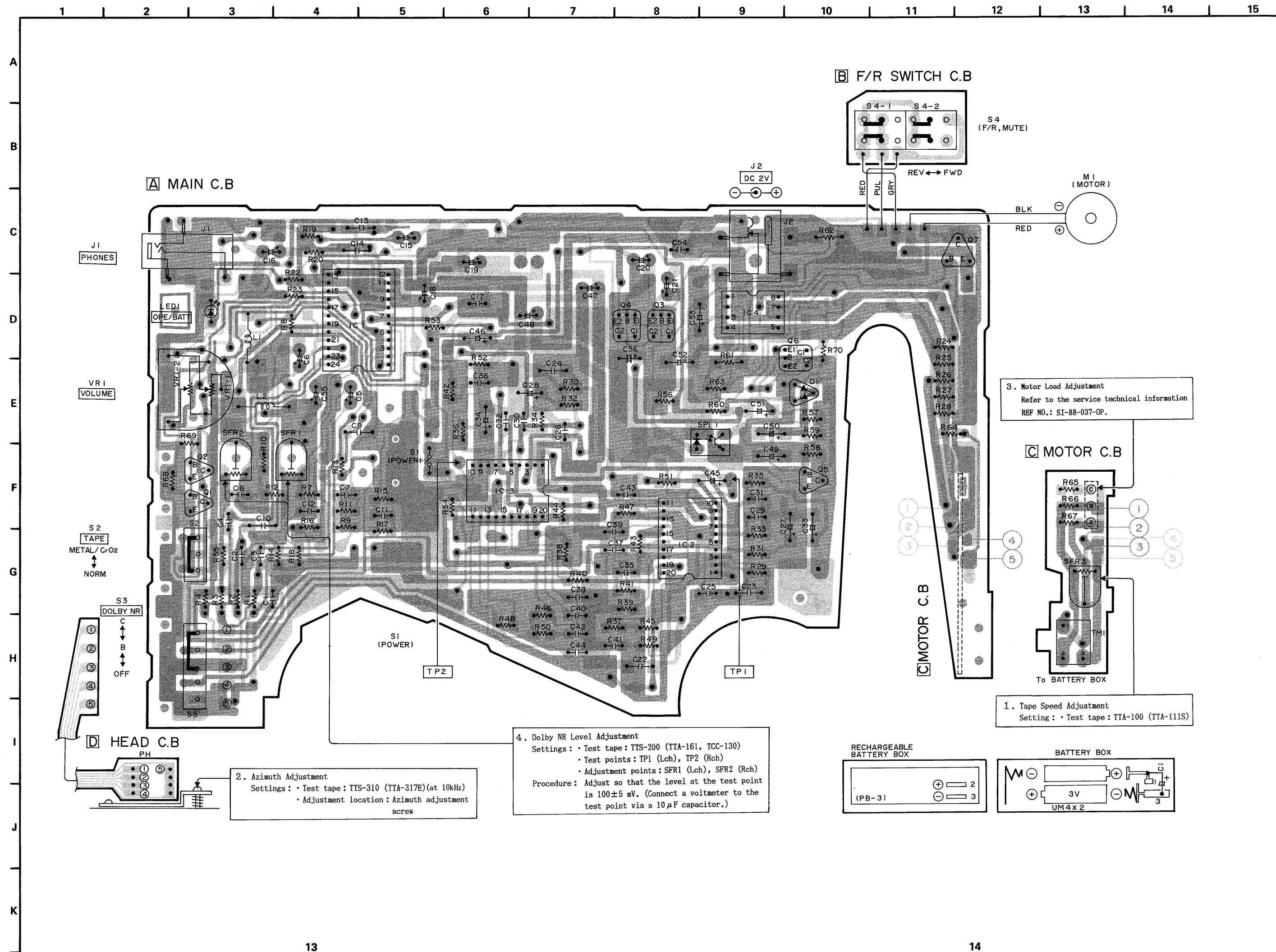
Pin No.	Pin Name	Description	Pin No.	Pin Name	Description
1	VRN	Input terminal for motor current detection	5	GND	GND terminal
2	VRP	Output terminal for reference voltage	6	VB	Terminal for prevention of oscillation
3	VIN	Input terminal for reference voltage control	7	VB0	Output terminal for the motor speed of control
4	VCC	Power supply terminal	8	VM	Input terminal for the motor speed of detection



IC DESCRIPTION
(HS — PC202M II / PC203)
IC,AN6612S

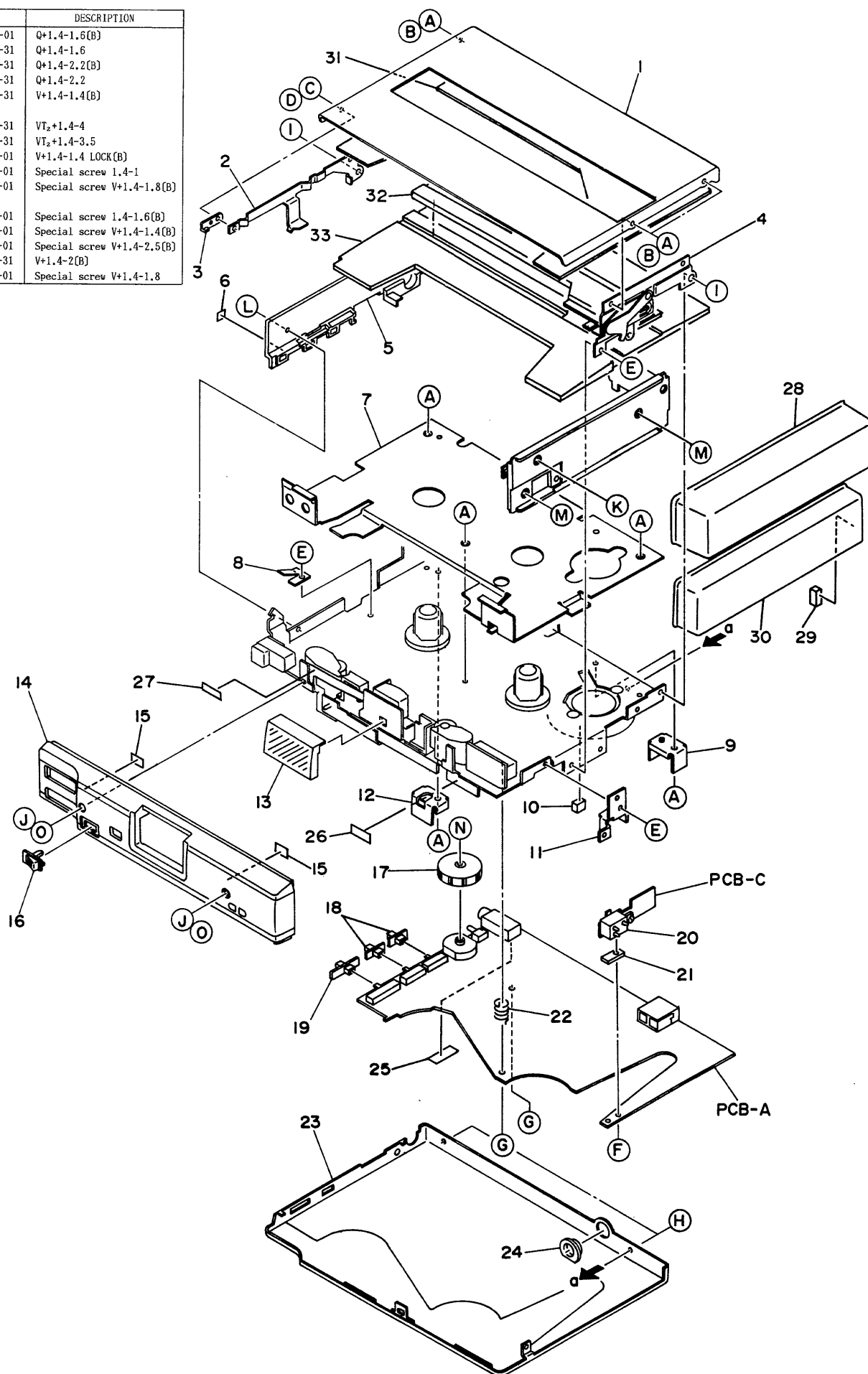
Pin No.	Pin Name	Description
1	VRN	Input terminal for motor current detection
2	VRP	Output terminal for reference voltage
3	VIN	Output terminal for reference voltage control
4	VCC	Power supply terminal
5	GND	GND terminal
6	VB	Terminal for prevention of oscillation
7	VBO	Output terminal for the motor speed of control
8	VM	Input terminal for the motor speed of detection





EXPLODED VIEW – 1

REF.NO.	PART NO.	DESCRIPTION
A	87-067-279-01	Q+1.4-1.6(B)
B	87-233-501-31	Q+1.4-1.6
C	87-231-504-31	Q+1.4-2.2(B)
D	87-233-504-31	Q+1.4-2.2
E	87-261-500-31	V+1.4-1.4(B)
F	87-357-509-31	VT ₂ +1.4-4
G	87-357-508-31	VT ₂ +1.4-3.5
H	87-067-589-01	V+1.4-1.4 LOCK(B)
I	87-067-288-01	Special screw 1.4-1
J	87-067-320-01	Special screw V+1.4-1.8(B)
K	87-067-549-01	Special screw 1.4-1.6(B)
L	87-067-501-01	Special screw V+1.4-1.4(B)
M	87-067-394-01	Special screw V+1.4-2.5(B)
N	87-262-503-31	V+1.4-2(B)
O	87-067-287-01	Special screw V+1.4-1.8

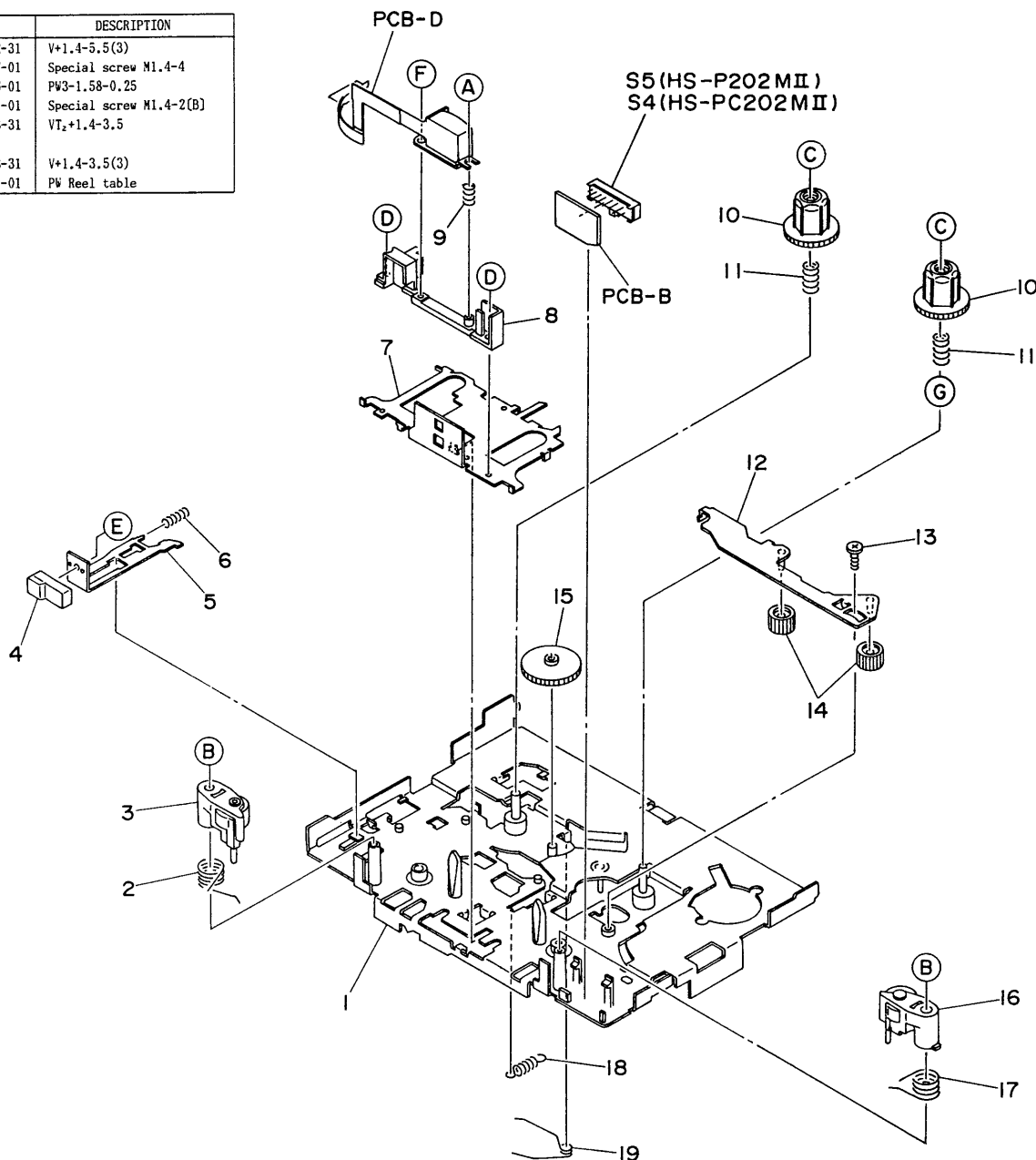


MECHANICAL PARTS LIST

PART NO. CHANGED TO	REF. NO.	PART NO.	DESCRIPTION	COMMON MODEL	Q, TY
	1-1	80-HKB-001-010	CASSETTE LID(B) (P202M2 Y,Y1,YJ1)	*	1
	1-1	80-HKA-001-010	CASSETTE LID(B) (PC202M2 Y,Y1,YJ1)	*	1
	1-1	80-HKA-010-010	CASSETTE LID(B) (PC203)	*	1
	1-1	80-HKB-007-010	CASSETTE LID(S) (P202M2 Y,YJ1)	*	1
	1-2	*84-463-201-010	HOLDER,CASSETTE		1
	1-3	*84-463-221-010	LOCK,CASSETTE		1
	1-4	*84-463-202-010	SLIDE ARM ASSY		1
	1-5	*80-HKB-002-010	FRAME,CENTER(B) (P202M2)	*	1
	1-5	*80-HKA-005-010	FRAME,CENTER(B) (PC202M2,PC203)	*	1
	1-5	*80-HKB-012-010	FRAME,CENTER(S) (P202M2)	*	1
	1-6	*84-463-229-019	CLOTH,1.3-3		1
	1-7	*84-463-012-110	SHEET,DECORATIVE		1
	1-8	*84-463-209-010	P-SPRING,POP UP		1
	1-9	*84-463-207-010	HOLDER,JACK DC		1
	1-10	*82-670-228-010	G CUSHION 2-3-2.5		1
	1-11	*84-463-219-010	HOLDER,CONTACT ASSY		1
	1-12	*84-463-237-019	HOLDER,HP A		1
	1-13	*84-464-069-010	BUTTON,PLAY(B)		1
	1-13	*84-463-008-010	BUTTON,PLAY(S) (P202)		1
	1-14	*80-HKA-004-010	PANEL,CONTROL(B)	*	1
	1-14	*80-HKB-011-010	PANEL,CONTROL(S) (P202)	*	1
	1-15	*82-654-473-010	MYLAR SHEET 4-6-0.2		2
	1-16	*84-464-014-110	KNOB,DIRECTION(B)		1
	1-16	*84-HKB-014-010	KNOB,DIRECTION(S) (P202)	*	1
	1-17	*84-438-009-010	KNOB,VOLUME		1
	1-18	*84-463-013-010	KNOB,SLIDE A		2
	1-19	*84-463-014-010	KNOB,SLIDE B		1
	1-20	*84-435-246-110	TERMINAL ASSY 1.4		1
	1-21	*84-463-220-010	SPACER,CONTACT ASSY		1
	1-22	*84-463-216-019	C-SPRING,MECHANISM EARTH		1
	1-23	*80-HKB-004-010	REAR CABINET ASSY(B) (P202M2 Y,Y1)	*	1
	1-23	*80-HKB-006-010	REAR CABINET ASSY(B) (P202M2 YJ1)	*	1
	1-23	*80-HKB-009-010	REAR CABINET ASSY(S) (P202M2 Y)	*	1
	1-23	*80-HKB-016-010	REAR CABINET ASSY(S) (P202M2 YJ1)	*	1
	1-23	*80-HKA-007-010	REAR CABINET ASSY(PC202M2 Y,Y1)	*	1
	1-23	*80-HKA-009-010	REAR CABINET ASSY(PC202M2 YJ1)	*	1
	1-23	*80-HKA-012-010	REAR CABINET ASSY(PC203)	*	1
	1-24	*84-463-057-110	SPACER,JACK		1
	1-25	*84-464-599-019	SHEET,PVC 5-5-0.4		1
	1-26	---	LABEL,DIRECTION		1
	1-27	*84-463-230-019	SHEET,PVC 12-3		1
	1-28	*09-027-617-010	BOX,BATTERY ASSY	*	1
	1-29	*84-463-224-010	CUSHION,4-4		1
	1-30	*84-463-005-110	BOX,BATTERY A		1
	1-31	*80-HKA-201-010	SD SHEET WINDOW	*	1
	1-32	*80-HKA-002-010	PLATE LID(B)	*	1
	1-32	*80-HKB-010-010	PLATE LID(S)	*	1
	1-33	*80-HKA-003-010	WINDOW LID	*	1
		*09-027-619-010	APPEARANCE SCREW KIT(B)	*	1
		*09-027-620-010	APPEARANCE SCREW KIT(S)	*	1

EXPLODED VIEW - 2

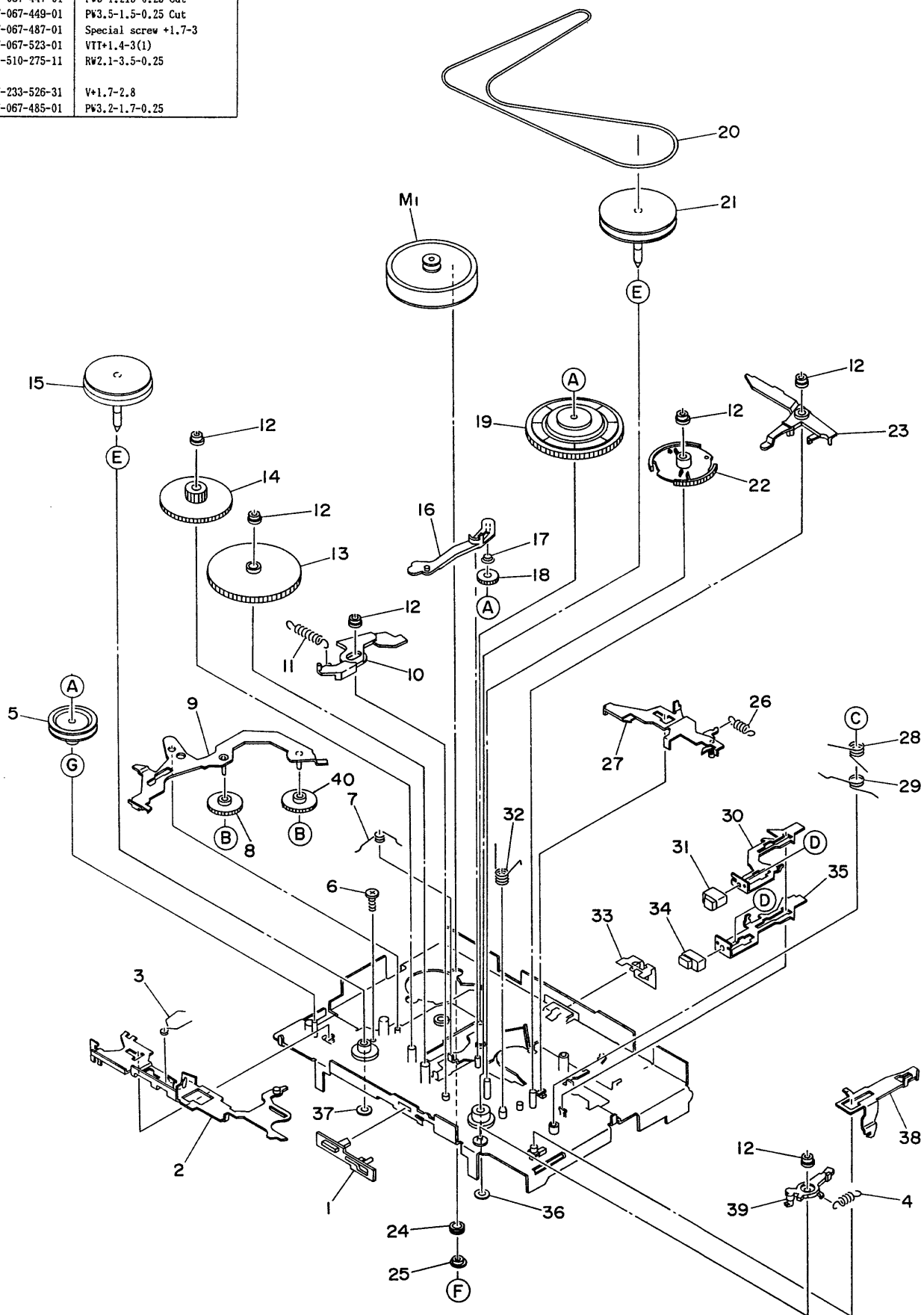
REF.NO.	PART NO.	DESCRIPTION
A	87-268-512-31	V+1.4-5.5(3)
B	87-067-517-01	Special screw M1.4-4
C	87-067-516-01	PW3-1.58-0.25
D	87-067-511-01	Special screw M1.4-2(B)
E	87-357-508-31	VT ₂ +1.4-3.5
F	87-268-508-31	V+1.4-3.5(3)
G	86-541-431-01	PW Reel table



PART NO. CHANGED TO	REF. NO.	PART NO.	DESCRIPTION	COMMON MODEL	Q, TY
	2-1	*86-541-411-910	OUTSERT ASSY BP		1
	2-2	*86-541-338-010	T-SPRING,PINCH RP		1
	2-3	86-541-218-110	PINCH LEVER R ASSY		1
	2-4	*84-463-009-010	BUTTON,STOP(B)		1
	2-4	*84-464-010-010	BUTTON,STOP(S)		1
	2-5	*86-541-261-210	PLATE,BUTTON STOP		1
	2-6	*86-541-329-019	C-SPRING,STOP		1
	2-7	*86-541-260-810	CHASSIS,SLIDE B		1
	2-8	*86-541-283-110	GUIDE,TAPE		1
	2-9	*86-541-318-110	C-SPRING,AZIMUTH		1
	2-10	*86-541-236-010	GEAR,REEL PLATFORM		2
	2-11	*86-541-328-019	C-SPRING,REEL PLATFORM		2
	2-12	*86-541-221-310	PLATE,FR ASSY		1
	2-13	*86-541-383-010	SCREW,FR		1
	2-14	*86-541-244-010	GEAR,FR		2
	2-15	*86-541-239-010	GEAR,REW		1
	2-16	86-541-216-110	PINCH LEVER F ASSY		1
	2-17	86-541-337-010	T-SPRING,PINCH F P		1
	2-18	86-541-331-010	E-SPRING,SLIDE		1
	2-19	86-541-347-110	T-SPRING,FR LEVER		1

EXPLODED VIEW – 3

REF.NO.	PART NO.	DESCRIPTION
A	87-067-447-01	PW3-1.215-0.25 Cut
B	87-067-449-01	PW3.5-1.5-0.25 Cut
C	87-067-487-01	Special screw +1.7-3
D	87-067-523-01	VIT+1.4-3(1)
E	81-510-275-11	RW2.1-3.5-0.25
F	87-233-526-31	V+1.7-2.8
G	87-067-485-01	PW3.2-1.7-0.25



PART NO. CHANGED TO	REF. NO.	PART NO.	DESCRIPTION	COMMON MODEL	Q, TY
	3-1	*86-541-289-010	BUTTON,MODE		1
	3-2	*86-541-222-410	PLATE,PINCH SELECT ASSY		1
	3-3	*86-541-320-610	T-SPRING,PLAY LEVER		1
	3-4	*86-541-343-010	E-SPRING,DIRECTION		1
	3-5	*86-541-235-110	PULLEY,RELAY B		1
	3-6	*86-541-383-019	SCREW,FR		1
	3-7	*86-541-334-210	T-SPRING,AUTO LEVER		1
	3-8	*86-541-242-210	GEAR,PLAY		1
	3-9	*86-541-479-110	LEVER,PLAY ASSY M		1
	3-10	*86-541-288-410	LEVER,MODE SELECT		1
	3-11	*86-541-341-010	E-SPRING,MODE SELECT		1
	3-12	86-541-376-110	COLLAR,PW-BOARD		6
	3-13	*86-541-237-110	GEAR,AUTO CAM		1
	3-14	86-541-448-010	GEAR,SLOW-DOWN		1
	3-15	86-541-213-210	FLYWHEEL ASSY FB		1
	3-16	*86-541-285-110	LEVER,AUTO		1
	3-17	*86-541-325-010	C-SPRING,AUTO GEAR		1
	3-18	*86-541-241-010	GEAR,AUTO		1
	3-19	86-541-206-010	GEAR CLUTCH ASSY		1
	3-20	86-541-371-010	BELT,B1		1
	3-21	86-541-214-110	FLYWHEEL ASSY RB		1
	3-22	*86-541-249-410	GEAR,CAM P		1
	3-23	*86-541-284-310	LEVER,TRIGGER		1
	3-24	*86-511-445-010	G CUSHION,MOTOR		2
	3-25	*86-541-449-010	MOTOR COLLAR B		2
	3-26	*86-541-332-019	E-SPRING,PLATE LOCK		1
	3-27	*86-541-407-410	PLATE LOCK ASSY PB		1
	3-28	*86-541-349-019	T-SPRING,FR BUTTON		1
	3-29	*86-541-339-010	T-SPRING,TRIGGER		1
	3-30	*86-541-264-610	PLATE,BUTTON REW		1
	3-31	*84-463-011-010	BUTTON,REW(B)		1
	3-31	*84-464-019-110	BUTTON,REW(S)		1
	3-32	*86-541-345-110	T-SPRING,SELECT CAM		1
	3-33	*86-541-323-010	P-SPRING,CASSETTE SUPPORT		1
	3-34	*84-463-010-010	BUTTON,FF(B)		1
	3-34	*84-464-011-110	BUTTON,FF(S)		1
	3-35	*86-541-262-210	PLATE,BUTTON FF		1
	3-36	87-034-739-010	SOMA SHEET 1.63-3.2-0.3		1
	3-37	87-067-605-010	SOMA SHEET 3.5-1.45-0.3		1
	3-38	*86-541-263-210	PLATE,EJECT		1
	3-39	*86-541-286-010	LEVER,DIRECTION		1
	3-40	*86-541-477-110	GEAR,PLAY M		1
		*09-027-568-010	COLLAR,PW-BOARD KIT		1

■ ACCESSORIES/PACKAGE LIST

PART NO. CHANGED TO	REF. NO.	PART NO.	DESCRIPTION	COMMON MODEL	Q, TY
	1	*80-HKA-901-019	INSTRUCTION BOOKLET,Y	*	1
	2	*80-HKA-951-010	CARRYING CASE	*	1
	3	*09-027-617-010	BATTERY BOX ASSY	*	1
	4	*84-463-005-110	BOX,BAT A BK (PB-3)		1
	5	*87-042-047-019	AC-205U(PC203)		1
	6	*87-047-095-010	PB-3(PC203)		1
	7	87-048-153-019	HP-M16(Y,PC203)		1
	8	87-048-162-019	HP-19 BK (Y1)		1