



△	Ref. No.	Parts No.	Parts Name	Remarks	Q'ty
	65	VYN2117-002KA	Name Plate	KD-V6B	1
	"	" -003KA	"	KD-V6A	1
	"	" -004KA	"	KD-V6C	
	"	" -005KA	"	KD-V6E	1
	"	" -006KA	"	KD-V6J	1
	"	" -007KA	"	KD-V6U	1
	66	—	Main Amp. Ass'y		1
	67	—	Mechanism Ass'y		1
	68	SDSF3010C	Screw	Mecha./Front Panel	4
	69	WBS3000N	Washer		2
△	70	TAW000504-01	Connector	KD-V6U/C/J	2
	72	VJC1311-001	Front Panel		1
	73	VKL3488-001	Amp. Chassis (L)		1
	74	VKL3494-001	" (R)		1
	75	SSST3006Z	Screw	Front Panel	2
	76	VJD4437-004	Dial Plate	"	1
△	77	QMP1200-200	Power Cord	KD-V6C	1
△	"	" -200	"	KD-V6J	1
△	"	QMP2560-200	"	KD-V6A	1
△	"	QMP3900-200	"	KD-V6E	1
△	"	QMP7600-200	"	KD-V6U	1
△	"	QMP9017-008BS	"	KD-V6B	1
△	78	QSP1110-305	Push Switch	KD-V6E	1
△	"	" -305	"	KD-V6A	1
△	"	" -305BS	"	KD-V6B	1
△	"	" -306	"	KD-V6U	1
△	"	" -308	"	KD-V6C	1
△	"	" -308	"	KD-V6J	1
△	79	QCZ9014-103	C. Capacitor	KD-V6C	1
△	"	" -103	"	KD-V6J	1
△	80	LPSP3006Z	Screw	Push Switch	1
△	81	VTP57A5-021B	Power Transformer	KD-V6J	1
△	"	" -021B	"	KD-V6C	1
△	"	VTP57C5-021B	"	KD-V6A	1
△	"	" -021B	"	KD-V6E	1
△	"	" -021BS	"	KD-V6B	1
△	"	VTP57U5-011B	"	KD-V6U	1
△	82	SDST3006Z	Screw	P. Trans.	3
△	83	—	Timer Switch Ass'y		1
△	84	E70913-001	Mark		1
	85	SLA-5641-05	Module		1
	86	LD-702YU	L.E.D.		1
	87	—	Display Ass'y		1
	88	—	Counter Switch Ass'y		1
	89	—	NR/MPX Switch Ass'y		1
	90	SDST3006Z	Screw		2
	91	SSSP2606Z	"		2
	92	—	Remote Control Jack Ass'y		1
	93	—	Operation Switch Ass'y		1
	94	—	Headphone Jack Ass'y		1
	95	—	Digital Peak Switch Ass'y		1

# Enclosure Assembly Parts List

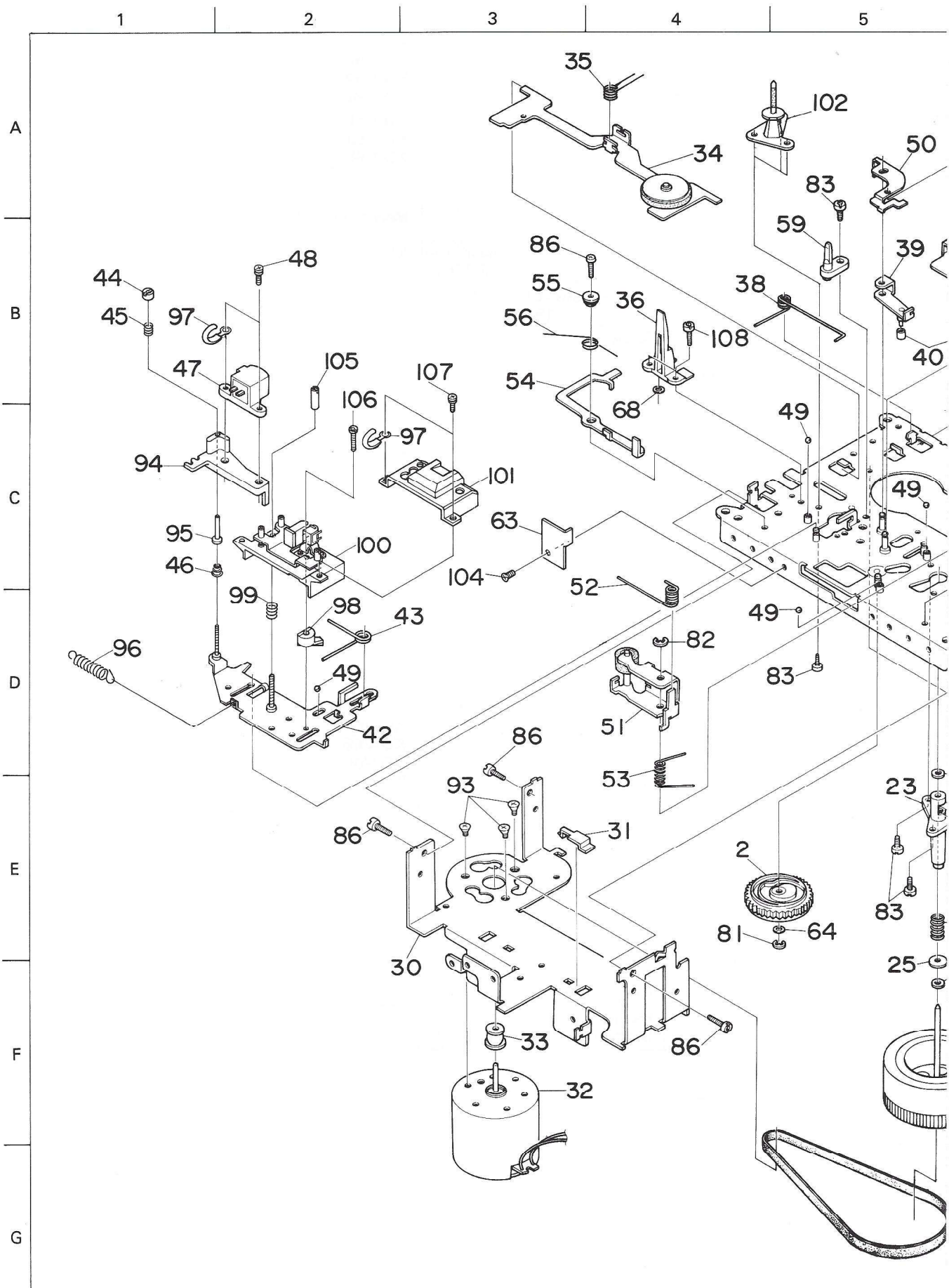
⚠ parts are safety assurance parts.

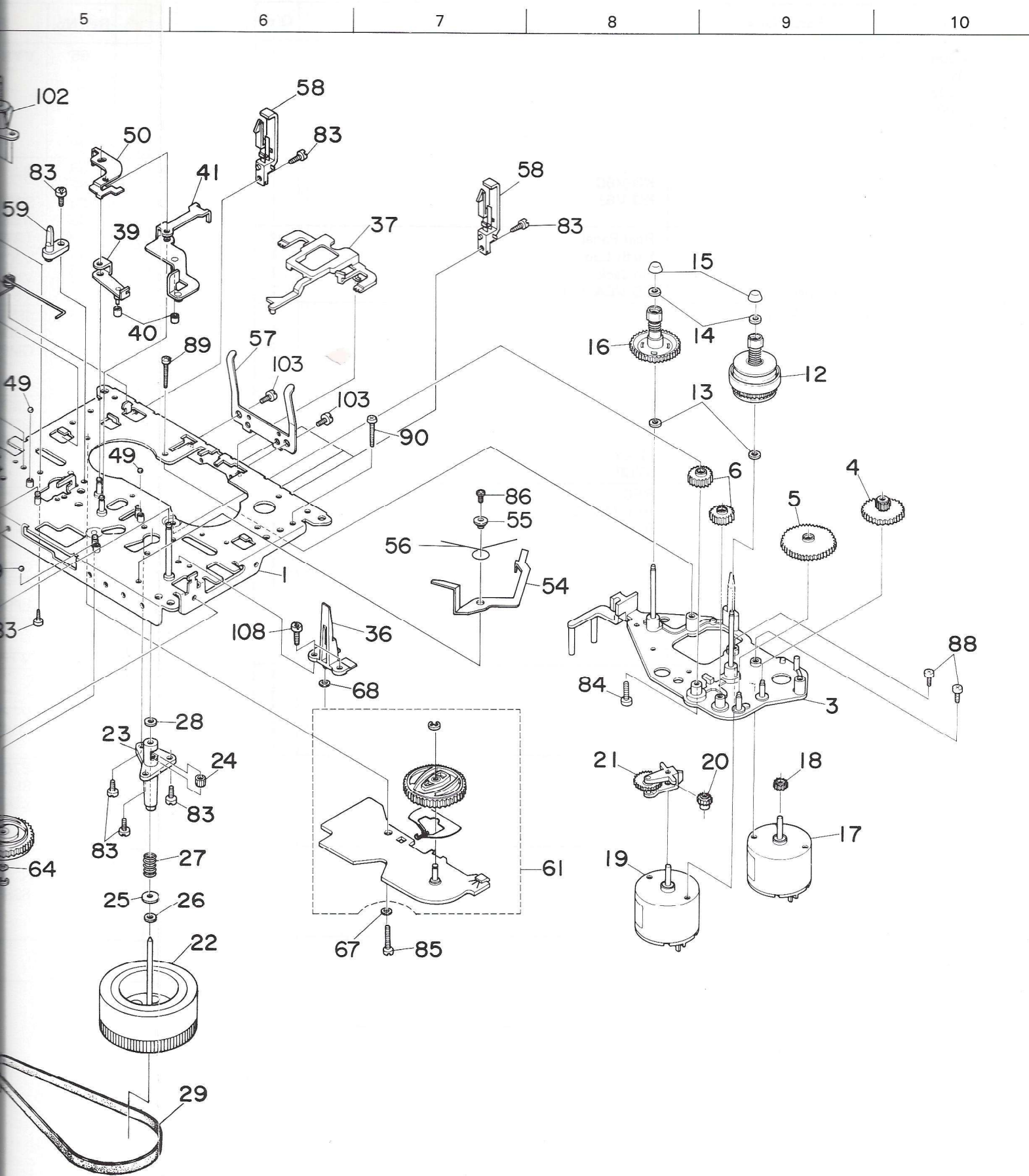
When replacing those parts, make sure to use the specified one.

⚠	Ref. No.	Parts No.	Parts Name	Remarks	Q'ty
	3	VKL5324-00B	Eject Bracket Ass'y		1
	4	SDST2604Z	Screw		1
	5	VKL3491-002	Eject Lever		1
	6	VKW4396-002	Spring		1
	7	REE2500	E-Washer		1
	8	VKY4296-001	Spring		1
	9	SDST2603Z	Screw		1
	10	VJC2127-005	Rear Panel	KD-V6C	1
	"	" -005	"	KD-V6J	1
	"	" -006	"		1
	11	SDST3006N	Screw	Rear Panel	4
	12	SDST3006Z	"	Earth Lug	1
	13	SDFS3008N	"	Pin Jack	1
⚠	14	QHS3876-162	Cord Stopper	KD-V6A/C/E/J/U	1
	15	ZCKDV6Y-CBF	Front Plate Ass'y		1
	16	VJK3217-002	Finder		1
	17	VJK4206-002	Lens		1
	18	VJD3437-002	Escutcheon		1
	19	SSSF3008Z	Screw	F. Panel/F. Panel	6
	20	VXP4347-001	Push Button	Reset	1
	21	" -002	"		1
	22	VJD2210-001	Push Button Case		1
	23	VXP3098-001	Push Button	PLAY	1
	24	" -002	"	STOP	1
	25	VXP3099-001	"	REC	1
	26	" -002	"	REC MUTE	1
	27	VXP3100-001	"	REW	1
	28	" -002	"	FF	1
	29	VXP4349-00A	"		1
	30	VKW3001-063	Spring		1
	31	VXP3102-001	Push Button	PAUSE	1
	32	VXP4348-001	"	IS/BS/MS	3
	33	VJT2077-002	Cassette Holder		1
	34	VJD4637-004	Plate		1
	35	VKY4271-003	Spring		1
	36	" -004	"		1
	37	VYSA1R4-066	Spacer		1
	38	F00303-34	"		2
	39	VKW3006-091	Spring		1
	40-42	ZCKDV6Y-CCA	Cassette Lid Ass'y		1
	40	VJT4085-00A	Lid		1
	41	VJT4068-001	Lid Plate		2
	42	VJT4078-001	"		1
	43	VYH5133-002	Gear		1
	44	VYH5134-002	"		1
	46	VKL5490-002	Timer Bracket		1
	47	VKW3001-077	Spring		1
	48	VXS4041-005	Slide Knob	TIMER	1
	49	VXP4345-001	Push Button		1
	50	VKS4003-008	Pipe		1
	51	VXP4346-001	Push Button	COUNTER	7
	52	VXS4116-001	Slide Knob	INPUT	1
	53	VKS3183-001	Lever		1
	54	VKS3184-001	Slide Lever		1
	55	VXL4181-005	Knob		2
	56	VYH5139-002	Arm		1
	57	VJC2101-002	Top Cover		1
	58	VKZ3001-004	Screw		4
	59	SDST3006N	"		2
	60	VYSA1R8-027	Spacer		2
	61	VJC1195-004	Bottom Cover		1
	62	VJF4003-002	Foot		4
	63	SDST3006Z	Screw		4
	64	SBSF3010Z	"		1



# Exploded view of Mechanism assembly





6

7

8

9

10

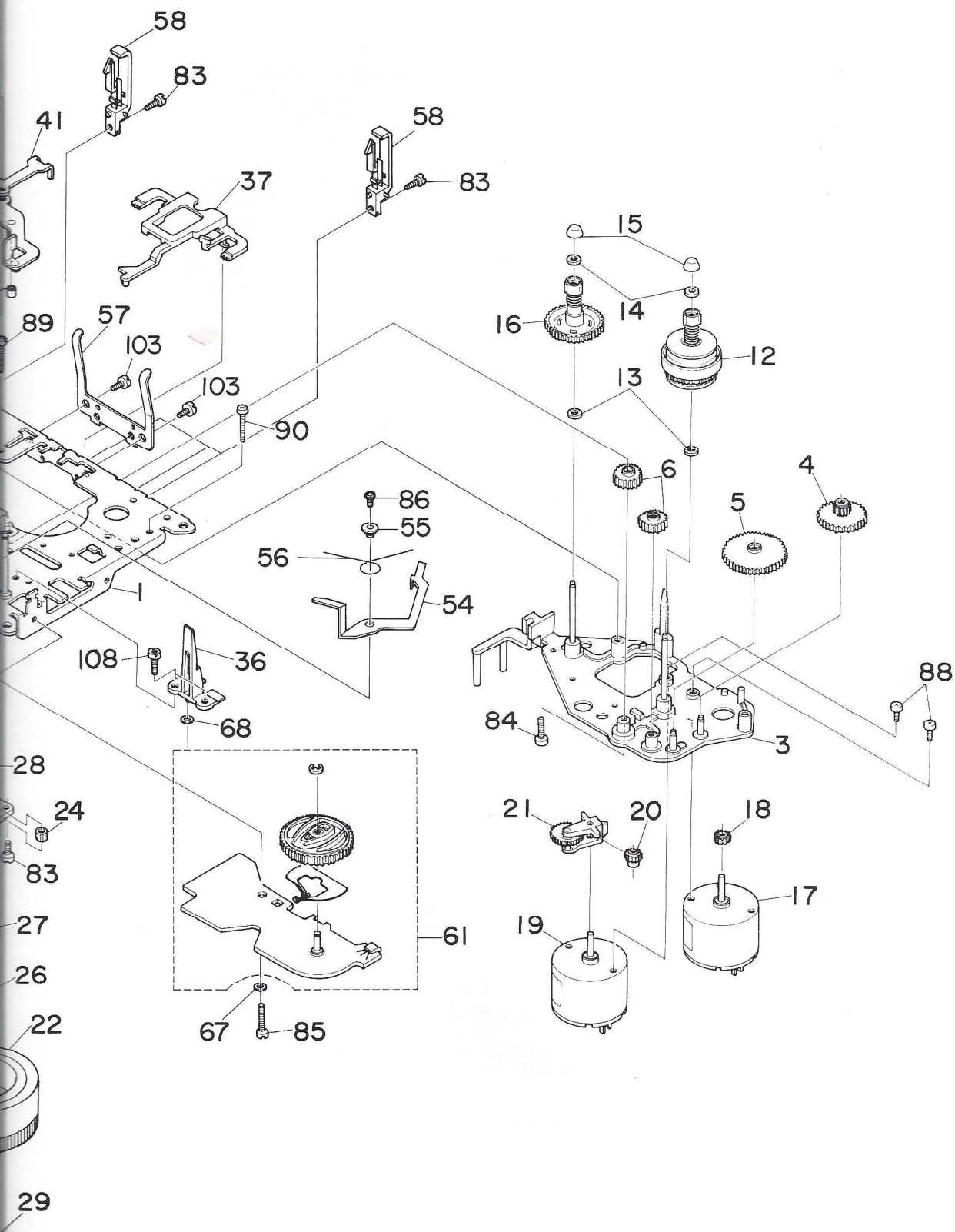


Fig. 20



# Mechanical Component Parts List

△ parts are safety assurance parts.

When replacing those parts, make sure to use the specified one.

△	Ref. No.	Parts No.	Parts Name	Remarks	Q'ty
	1	VKL2175-00B	Chassis Base		1
	2	VKS2122-001	P. Roller Cam		1
	3	VKL2173-00A	Base		1
	4	VKR3001-001	Gear (2)		1
	5	" -002	" (2)		1
	6	VKR3000-001	Gear (1)		2
	12	VKR4312-00B	Reel Disk Ass'y		1
	13	VKZ4003-010	Spring		1
	"	" -010	"		1
	14	VKR4170-001	Ring	Disk	1
	"	" -001	"	Disk	1
	15	VKS4131-001	Reel Stopper		1
	"	" -001	"		1
	16	VKR4318-00A	Reel Disk		1
△	17	MMN-6C2RK	DC Motor	Cam	1
△	18	VKR4326-001	Gear	Cam Motor	1
	19	MMN-6C2RK	DC Motor	Reel	1
	20	VKR3000-003	Gear (1)	Reel Motor	1
	23	VKF4122-00A	C. Metal Ass'y		1
	24	VKR4180-001	Roller	Take-up	1
	25	Q03093-622	Washer		1
	26	" -827	"	Thrust	1
	27	VKW3001-010	Spring	"	1
	28	Q03093-522	Washer	Oil Cut	1
	30	VKL3410-006	F.M. Bracket		1
△	31	VKS4437-001	Thrust Plate		1
	32	BFA2L74	DC Motor	Capstan	1
	33	VKR4317-001	Motor Pulley		1
	34	VKL3411-00B	Take-up Idler		1
	35	VKW3006-099	Spring	Take-up	1
	36	VKS4505-003	Cassette Guide		2
	37	VKS3162-002	Brake Bar		1
	38	VKW4380-001	Spring		1
	39	VKL5316-00A	Arm		1
	40	VKH3000-058	Collar		1
	41	VKL3421-00A	Pinch Roller Lever A		1
	42	VKH3000-058	Collar		1
	43	VKW4467-002	Spring		1
	44	VKH4240-001	Adjust Screw		1
	45	VKW3001-040	Spring		1
	46	VKW4430-001	Spring		1
	47	VGH0212-103	Eraser Head	E. Head	1
	48	LPSP2005Z	Screw		2
	49	T41615-004	Steel Ball		4
	50	VKY4278-001	Spring Plate		1
	51	VKP4131-00B	Pinch Roller		1
	52	VKW3006-056	Spring		1
	53	" -057	"		1
	54	VKL5553-001	Lock Lever		1
	55	VKH4418-001	Flange Collar	Door Safety	1
	56	VKW3006-061	Spring	Door Safety	1
	57	VKY4279-001	"		1
	59	VKS4512-002	Guide Post		1
	61	VKZ3111-00A	Switch	Cam Switch Ass'y	1
	63	VKL5398-001	Bracket		1
	64	Q03093-834	Washer		1
	67	WNS2600N	"		1
	68	Q03093-630	"		2
	81	REE2000	E. Ring		1
	82	REE2500	E. Washer		1

△	Ref. No.	Parts No.	Parts Name	Remarks	Q'ty
	83	HPST2605Z	Screw		11
	84	HDST2608Z	"	D. Base Unit	1
	85	HPST2612Z	"	"	1
	86	HDST2605Z	"	F.M. Bracket	3
	"	HDST2605Z	"		1
	"	HPST2605Z	"		1
	88	DPSP2608Z	"	Reel Motor	1
	"	DPSP2608Z	"	Cam Motor	1
	89	SPSP2613Z	"	Reel Motor	1
	90	SPSP2615Z	"	Cam Motor	1
	93	SSSP2604Z	"	Capstan Motor	3
	94	VKF4110-001	E. Head Lever		1
	95	VKH3001-041	Flange Collar		1
	96	VKW3002-138	Spring		1
	97	VKZ4001-009	Holder		2
	98	VKS4536-002	Head Collar		1
	99	VKW3001-094	Spring		1
	100	VDG2117-M0A01A	V6 Head Ass'y		1
	101	VKZ3110-001	Head Cover		1
	102	VKS4598-00A	Holder	Tension	1
	103	HPST2604Z	Screw		2
	104	SSST2604Z	"	Bracket	1
	105	VKH4411-001	Azimuth Screw		1
	106	SPSX2010N	Screw		1
	107	LPSP2004Z	"		2
	108	HDST2605Z	"	Cassette Guide	4



# Packing

Positions of controls and switch knobs  
at remarked packing:

POWER switch . . . . . OFF  
 TIMER switch . . . . . OFF  
 MPX, NR switch . . . . . OFF  
 MONITOR switch . . . . . TAPE  
 MEMORY switch . . . . . OFF  
 COUNTER (STOP WATCH) . . . OFF  
 OUTPUT LEVEL control . . . . MAX  
 INPUT LEVEL . . . . . MIN  
 INPUT BALANCE . . . . Center (click)

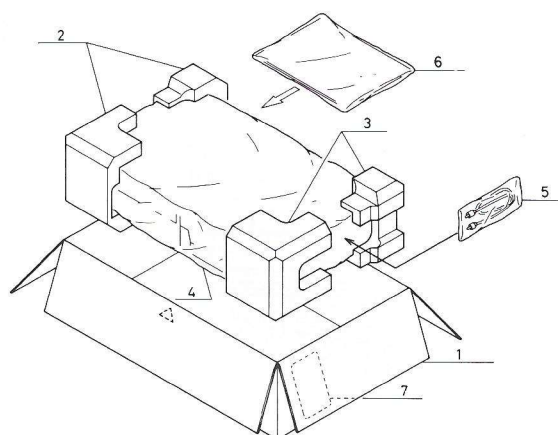


Fig. 21

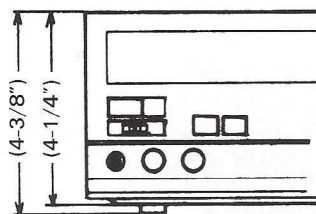
## Packing Parts List

Ref. No.	Parts No.	Parts Name	Remarks	Q'ty
1	VPD2117-J02	Carton	KD-V6B	1
"	" -J03	"	KD-V6A	1
"	" -J04	"	KD-V6C	1
"	" -J05	"	KD-V6E	1
"	" -J06	"	KD-V6J	1
"	" -J07	"	KD-V6U	1
2	VPH3125-001	Cushion	Left	1
3	VPH3126-001	"	Right	1
4	VPE3004-026	Poly Bag	Unit	1
5	AP4056A-36	"	Pin Cord	1
6	VPE3004-001	"	Instruction Book	1
7	E66416-003	Envelope	KD-V6J/U Warranty	1
	VPK4002-006	Sheet	Unit	1
	VPZ4001-001	Serial Ticket		2

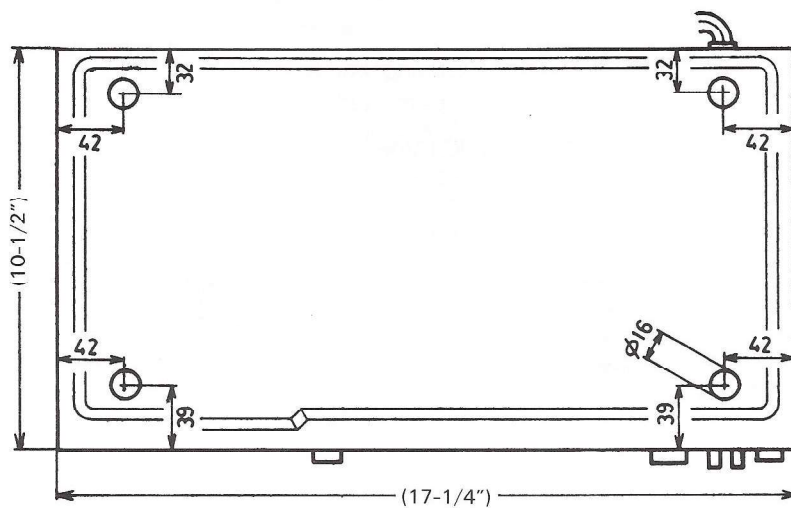
## Accessories

△	Parts No.	Parts Name	Remarks	Q'ty
	VNN0126-301	Instruction Book	KD-V6B/E	1
	" -901	"	KD-V6A/C/J/U	1
	BT20060	Guaranty Certificate	KD-V6B	1
	BT20066	"	KD-V6B	1
	TJL000420-01	Label	KD-V6B Made in Japan	1
	QZL1002-003	Warning Label	KD-V6	1
	VND4113-001	G. Caution	KD-V6B/J	1
	BT20029C	Warranty Card	KD-V6A	1
	BT20025G	"	KD-V6C	1
	BT20057	"	KD-V6E	1
	BT20047A	"	KD-V6J/U	1
	BT20071	Service Center List	KD-V6C	1
	BT20046B	Special Reply Card	KD-V6J/U	1
	BT20044	Safety Instruction	KD-V6J	1
	T44362-001	CSA Label	KD-V6C	1
	VNC1200-002	Copyright Law	KD-V6C	1
	VNC5004-001	Mark Sticker	KD-V6E	1
	VND4013-001	Warning Label	KD-V6E	1
	VND4037-002	F. Mark	KD-V6E	1
	VNC5311-201	Caution Card	KD-V6U (EES)	1
	V04062-001	Siemens Plug	KD-V6U	1
	VMP0002-00B	Pin Cord Ass'y		2

# Dimensions



unit : mm



# JVC

VICTOR COMPANY OF JAPAN, LIMITED.  
RADIO & RECORDING MACHINE DIVISION 10-1, 1-chome, Ohwatari-cho, Maebashi-city 371, Japan