

**SONY®**

3-760-110-22 (1)

**FM/AM STEREO CASSETTE-PLAYER WM-F10II****WALKMAN**  
FM/AM**OPERATING INSTRUCTIONS**

Before operating the unit, please read this manual thoroughly.

This manual should be retained for future reference.

WALKMAN is a trade mark of Sony Corporation.

Sony Corporation ©1984

Printed in Japan

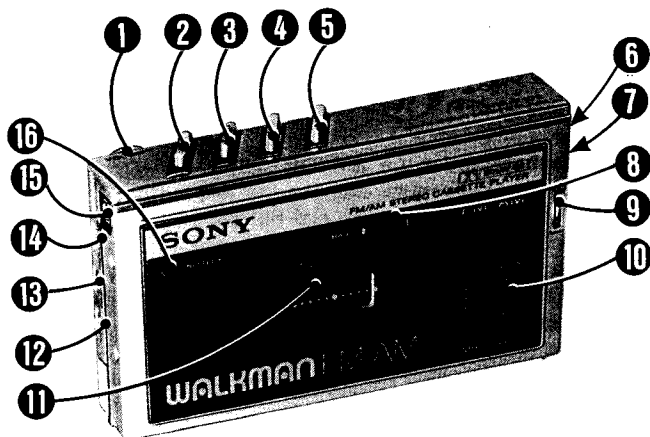
**OWNER'S RECORD**

The model number is located on the top of the unit and the serial number is in the battery compartment. Record the serial number in the space provided below. Refer to these numbers whenever you call upon your Sony dealer regarding this product.

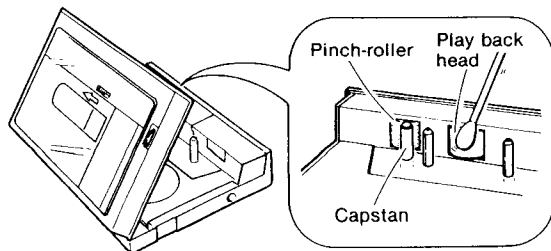
Model No. WM-F10II      Serial No. \_\_\_\_\_

**PARTS IDENTIFICATION**

- |  |   |
|--|---|
| ① VOL (volume) control                   | ⑩ Dial scale                              |
| ② ◀ PLAY (playback) button               | ⑪ Cassette holder                         |
| ③ ■ STOP button                          | ⑫ TAPE selector                           |
| ④ ▶▶ (fast forward) button               | ⑬ FM SENS (sensitivity)/DOLBY NR selector |
| ⑤ ▶▶ (rewind) button                     | ⑭ Function selector                       |
| ⑥ Battery compartment (inside)           | ⑮ Headphones jack (stereo minijack)       |
| ⑦ DC IN 1.5V (external power input) jack | ⑯ BATTERY indicator                       |
| ⑧ BAND selector                          |   |
| ⑨ Tuning knob                            |   |

**CLEANING THE HEAD**

Clean the tape head after every 10 hours of use to enjoy optimum hi-fi stereo sound: moisten a cotton swab or a soft cloth with de-natured alcohol and wipe the head, pinch-roller and capstan.

**PRECAUTIONS**

- Operate the set only on 1.5V dc.
- Do not leave the set in a location near heat sources, or in a place subject to direct sunlight, excessive dust, moisture, rain or mechanical shock.
- For the set to operate at its best, it should not be subject to temperature below 5°C (41°F).

**About the headphones**

- Avoid playing your WALKMAN at so loud a volume that extended play might affect your hearing.
- At a high volume outside sounds may become inaudible. Avoid listening to your WALKMAN in situations where hearing must not be impaired, for example, while driving or cycling.
- As the supplied headphones are of open-air design, sounds go out through the headphones. Remember not to disturb those close to you.

**Note on the 120-minute cassette**

The use of a 120-minute cassette tape is not recommended except when long continuous playback is absolutely necessary. When using this cassette tape, do not switch the tape operation mode frequently. This results in the tape becoming entangled because this very thin tape can easily be stretched.

If you have any question or problem concerning your set that is not covered in this manual, please consult the nearest Sony Service Station authorized to service tape recorders (in the USA) or the nearest Sony of Canada Factory Service Station (in Canada).

**SPECIFICATIONS****Radio section**

Frequency range FM: 87.6–108 MHz

AM: 530–1,605 kHz

Antenna FM: Headphone cord antenna

AM: Built-in ferrite bar antenna

**Tape player section and general**

Tape track 4-track 2-channel stereo

Fast winding time Approx. 3 min. with Sony cassette C-60

Frequency response (DOLBY NR OFF)

40–15,000 Hz (with the TAPE selector set to METAL/CrO<sub>2</sub>)

40–14,000 Hz (with the TAPE selector set to NORM)

Power output 4 mW × 2 (at 10% harmonic distortion) at dc operation

Power requirements 1.5V dc

Size AA battery (IEC designation R6)

External batteries (used in the optional battery case EBP-10):

size AA (IEC designation R6) × 2

DC IN 1.5V jack accepts: Sony AC-D1 ac power adaptor (optional)

for use on 120V ac or Sony DCC-70 car battery cord (optional)

for use with 12V car battery.

**Battery life**

Battery	FM/AM reception	Tape playback
Sony New Super SUM-3(NS)	10	2
Sony Eveready alkaline No.E91	20	4

(hours)

For maximum performance we recommend the use of alkaline battery.

**Dimensions:**

Without cassette:

Approx. 110.8 × 70 × 21.4 mm (w/h/d) (4 3/8 × 2 7/8 × 7/32 inches)

not incl. projecting controls

With cassette:

Approx. 111.5 × 86.5 × 22.5 mm (w/h/d) (4 1/2 × 3 1/2 × 9/32 inches)

incl. projecting controls

Weight: Approx. 200 g (7 oz) incl. battery, not incl. other accessories

**Accessories supplied:**

Stereo headphones (1)

Sony Eveready No.E91 Alkaline battery (1)

Carrying case (1)

Design and specifications subject to change without notice.

**Optional accessories**

Stereo dynamic earphones MDR-E262

AC power adaptor AC-D1

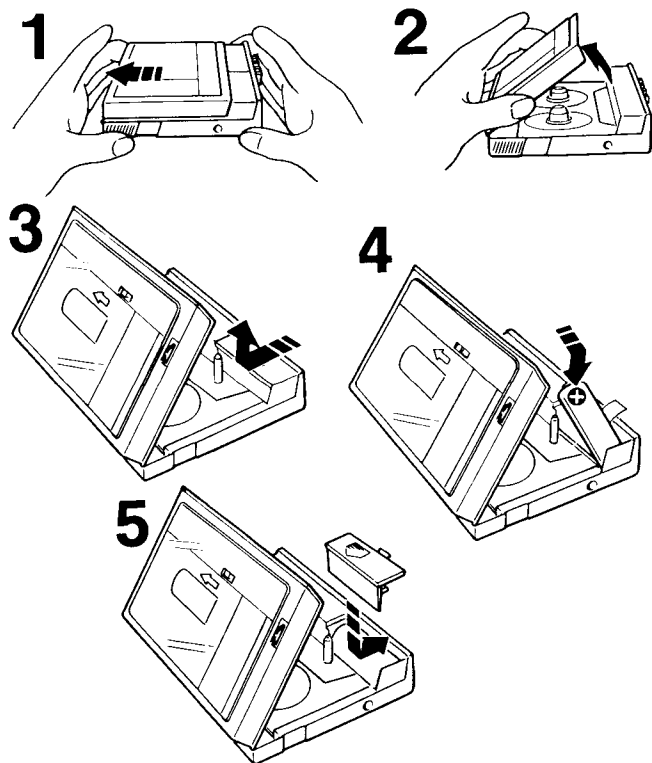
Car battery cord DCC-70

Battery case EBP-10

Stereo active speaker system SRS-30

## BATTERY INSTALLATION

Insert a size AA battery (IEC designation R6) following the illustration.



**Note:** If the set is not to be used for a long period of time, or is to be operated extensively with other power sources\*, remove the battery to avoid damage caused by battery leakage and corrosion.

\*In addition to using battery, you can operate the unit with the appropriate ac power adaptor or the car battery cord described in "Specifications".

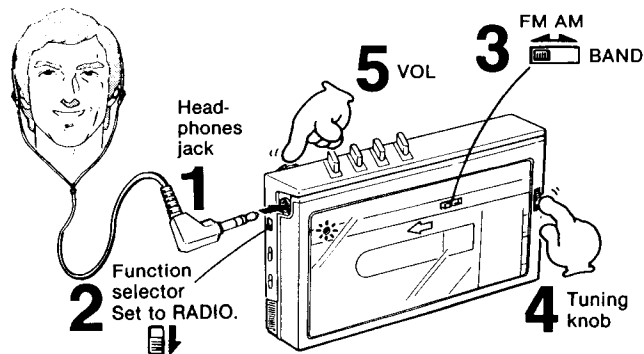
### Battery replacement

If the playback sound becomes distorted or unstable, replace the battery.

The BATTERY indicator will help you to know the battery condition. If the battery is weak, the indicator will glow faintly. For extended play, use the optional battery case EBP-10 to operate the set with two size AA batteries (IEC designation R6).

## RADIO RECEPTION

Follow steps 1 to 5 to listen to FM/AM.



**To listen to the radio,** release all tape operation buttons.

**To turn off the unit,** set the function selector to TAPE (RADIO OFF).

### Antennas

**For FM reception,** extend the cord of the headphones so that the sensitivity will be increased. The cord activates as an antenna.

**For AM reception,** rotate the set horizontally for optimum reception, if necessary. The built-in ferrite bar antenna activates.

### FM SENS (sensitivity) selector

This selector has a dual function.

For FM reception, this selector serves as an FM sensitivity selector. Normally set the selector to DX. However, if a very strong station signal causes noise or if multipath\* causes problems, set it to LOCAL. The noise will be reduced.

When playing a tape back, it serves as a DOLBY NR selector. See "DOLBY NR selector".

\*Multipath, which often occurs in a street with big buildings or in a mountainous area, is a signal reflection from structures or hills that reach the receiver considerably later than a direct signal. A multipath condition brings about high-frequency noise, distortion, and a poor stereo effect.

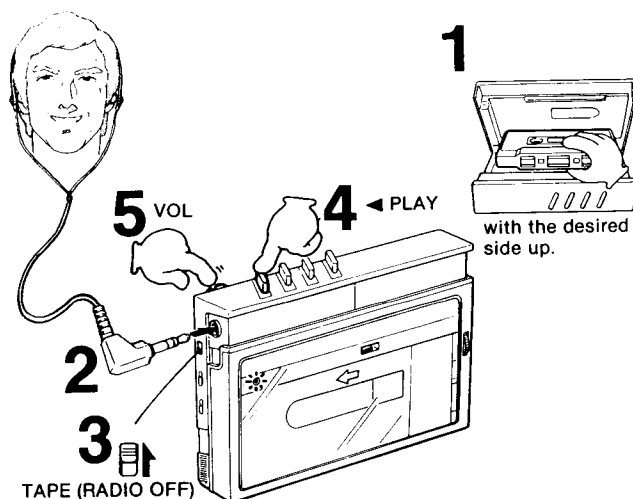
**Notes:** Be sure to remove the cassette tape if it has a metallic cassette shell or metallic labels. Such cassettes may cause interference or difficulty in tuning.

## TAPE PLAYBACK

Follow steps 1 to 5 to play back the tape.

Before inserting the cassette, take up any slack in the tape. If the slack is not taken up, the tape may become tangled and be damaged.

Before operating, turn the VOL control down to avoid a sudden burst of sound at a high volume.



**To stop playback,** press the ■ STOP button.

**To advance the tape rapidly,** depress the ◀◀ button.

**To rewind the tape,** depress the ▶▶ button.

In fast forward or rewind modes, power automatically turns off at the end of the tape and the motor stops to avoid battery wear. Be sure to press the ■ STOP button to release the ◀◀ and ▶▶ buttons.

### Notes

- Do not open the cassette holder while the tape is running.
- During playback, do not place the set near an AM receiver. If you do, it may interfere with the receiver.

### DOLBY \* NR selector

When playing back a Dolby NR-processed tape, set this selector to ON. When playing back a tape recorded without the Dolby NR process, set it to OFF.

\*"Dolby" and the double-D symbol are trade marks of the Dolby Laboratories Licensing Corporation. Noise reduction system manufactured under license from Dolby Laboratories Licensing Corporation.

### TAPE selector

For metal tapes (TYPE IV) or CrO<sub>2</sub> tapes (TYPE II), we recommend the METAL/CrO<sub>2</sub> position. For other kinds of tape (TYPE I), set the TAPE selector to NORM.