

SERVICE MANUAL


STEREO
CASSETTE PLAYER

BASIC TAPE MECHANISM : 7ZM-1 P1NF

- This Service Manual is the "Revision Publishing" and replaces "Simple Manual" (S/M Code No. 09-004-405-2T4).

SPECIFICATIONS

Maximum output:	4 mW + 4 mW (EIAJ 16 ohms)<AE> 4 mW + 4 mW (EIAJ 32 ohms)<AH,YH>
Load impedance:	16 – 32 ohms
Power sources:	DC 1.2 V using supplied rechargeable battery NB-5G, DC 1.5 V using an R6 (AA) dry cell battery, AC house current using the optional AC adaptor
Maximum dimensions:	80 (W) x 112.9 (H) x 18.9 (D) mm ($3\frac{1}{4}$ x $4\frac{1}{2}$ x $\frac{3}{4}$ in.)
Weight	Approx. 134 g, 4.7 oz. (excluding batteries)

- Design and specifications are subject to change without notice.
- Dolby noise reduction manufactured under license from Dolby Laboratories Licensing Corporation.
“DOLBY” and the double-D symbol  are trademarks of Dolby Laboratories Licensing Corporation.

ELECTRICAL MAIN PARTS LIST

REF.NO.	PARTNO.	KANRI NO.	DESCRIPTION	REF.NO.	PARTNO.	KANRI NO.	DESCRIPTION
IC				C143	87-A10-952-080		C-CAP,TN 22-4 M A MCM
	87-A21-179-010		C-IC,TA2123AF	C151	87-016-462-080		C-CAP,S 1-16 ZF<AE>
	87-A21-061-010		C-IC,ML63512-120	C152	87-016-462-080		C-CAP,S 1-16 ZF<AE>
	87-A21-050-040		C-IC,S-80810ANNP-E70-T2	C153	87-012-274-080		C-CAP,U 1000P-50 KB<AE>
	87-A20-603-140		C-IC,RN5RK241A	C154	87-010-746-080		C-CAP,TN 10-4 M 125<AE>
	87-A20-961-040		C-IC,MM1279XV				
	87-A20-818-040		C-IC,NJM2185AV<AE>	C155	87-016-526-080		C-CAP,S 0.47-16 BK<AE>
TRANSISTOR				C156	87-016-526-080		C-CAP,S 0.47-16 BK<AE>
	89-113-625-080		TR,2SA1362	C157	87-016-460-080		C-CAP,S 0.22-16 KB<AE>
	87-026-535-080		C-TR,RN4907	C158	87-016-460-080		C-CAP,S 0.22-16 KB<AE>
	87-026-418-080		TR,RN1311	C159	87-010-746-080		C-CAP,TN 10-4 M 125<AE>
	89-342-132-080		TR,2SC4213B				
	87-026-417-080		TR,RN1310	C160	87-016-462-080		C-CAP,S 1-16 F<AE>
	89-341-165-080		C-TR,2SC4116	C161	87-016-462-080		C-CAP,S 1-16 F<AE>
	87-026-481-080		C-TR,RN4607<AE>	C201	87-016-462-080		C-CAP,S 1-16 Z F
	87-A30-085-040		C-TR,CSA1362	C202	87-010-505-080		CAP,CHIP TANTALUM 1-16
	89-333-266-080		C-TR,2SC3326B	C203	87-A10-263-080		C-CAP,U 0.1-16ZF
DIODE				C204	87-A10-263-080		C-CAP,U 0.1-16ZF
	87-001-553-080		C-DIODE 1SS322	C205	87-A11-056-080		C-CAP,U 1-10 Z F
MAIN C.B				C206	87-A11-056-080		C-CAP,U 1-10 Z F
C101	87-012-273-080		C-CAP,U 820P-50 B	C207	87-A10-263-080		C-CAP,U 0.1-16ZF
C102	87-012-273-080		C-CAP,U 820P-50 B	C208	87-A10-263-080		C-CAP,U 0.1-16ZF
C103	87-012-273-080		C-CAP,U 820P-50 B				
C104	87-012-273-080		C-CAP,U 820P-50 B	C209	87-010-787-080		CAP, U 0.022-25
C105	87-A10-952-080		C-CAP,TN 22-4 M A MCM	C210	87-A10-263-080		C-CAP,U 0.1-16 Z F
C106	87-A10-952-080		C-CAP,TN 22-4 M A MCM	C211	87-012-270-080		CHIP CAP,U 470P-50B<AE>
C107	87-016-114-080		C-CAP,U 0.01-25 B<AE>	C211	87-012-276-080		CHIP CAP,U 1500P-50KB<YH,AH>
C107	87-012-286-080		C-CAP,U 0.01-25 K B<AH,YH>	C212	87-012-270-080		CHIP CAP,U 470P-50B<AE>
C108	87-016-114-080		C-CAP,U 0.01-25 B<AE>				
C108	87-012-286-080		C-CAP,U 0.01-25 K B<AH,YH>	C212	87-012-276-080		CHIP CAP,U 1500P-50KB<YH,AH>
C109	87-010-828-080		CHIP CAPACITOR,U 0.033	C213	87-012-282-080		CHIP CAP,U 4700P-50KB
C110	87-010-828-080		CHIP CAPACITOR,U 0.033	C214	87-012-274-080		CHIP CAP,U 1000P-50B
C111	87-A10-025-080		C-CAP,U 0.22-16Z F	C215	87-A10-263-080		C-CAP,U 0.1-16 Z F
C112	87-A10-031-080		C-CAP,U 0.01-25 KB	C216	87-A10-263-080		C-CAP,U 0.1-16 Z F
C113	87-A10-263-080		C-CAP,U 0.1-16ZF				
C114	87-A11-056-080		C-CAP,U 1-10 Z F	C251	87-016-462-080		C-CAP,S 1-16 F
C115	87-A10-952-080		C-CAP,TN 22-4 M A MCM	C252	87-A10-952-080		C-CAP,TN 22-4 M A MCM
C116	87-A11-244-080		C-CAP,TN 47-4 A MCM	C253	87-A10-263-080		C-CAP,U 0.1-16 Z F
C117	87-A10-707-080		C-CAP,U 0.47U-16 F Z	C254	87-A11-244-080		C-CAP,TN 47-4 M B2 MCM
C118	87-A10-707-080		C-CAP,U 0.47U-16 F Z	C255	87-A10-034-080		C-CAP,TN 33-10(B2)
C119	87-A10-707-080		C-CAP,U 0.47U-16 F Z				
C120	87-A10-704-080		C-CAP,TN 100-2.5 M B2	C256	87-A10-263-080		C-CAP,U 0.1-16ZF
C121	87-A10-704-080		C-CAP,TN 100-2.5 M B2	C257	87-A10-952-080		C-CAP,TN 22-4 M A MCM
C122	87-010-424-080		CAPACTOR,TANTAL 4.7-4	C261	87-A11-062-080		C-CAP,S 2.2-16 ZF
C123	87-A11-063-080		C-CAP,S 4.7-10 Z F	C271	87-A11-062-080		C-CAP,S 2.2-16 ZF
C124	87-A10-707-080		C-CAP,U 0.47U-16 F Z	C301	87-A10-031-080		C-CAP,U 0.01-25 KB
C125	87-A10-263-080		C-CAP,U 0.1-16ZF				
C126	87-A10-263-080		C-CAP,U 0.1-16ZF	C302	87-A10-260-080		C-CAP,U 0.1-16 K B
C127	87-A10-031-080		C-CAP,U 0.01-25 KB	C303	87-A11-063-080		C-CAP,S 4.7-10 Z F
C128	87-A10-031-080		C-CAP,U 0.01-25 KB	C304	87-A10-263-080		C-CAP,U 0.1-16ZF
C129	87-016-462-080		C-CAP,S 1-16 F	C305	87-A10-707-080		C-CAP,U 0.47-10 ZF
C130	87-016-462-080		C-CAP,S 1-16 F	C306	87-A10-707-080		C-CAP,U 0.47U-16 F Z
C131	87-012-274-080		CHIP CAP,U 1000P-50B				
C132	87-012-274-080		CHIP CAP,U 1000P-50B	C307	87-A10-031-080		C-CAP,U 0.01-25 KB
C133	87-A10-025-080		C-CAP,U 0.22-16Z F	C308	87-A10-031-080		C-CAP,U 0.01-25 KB
C134	87-A10-707-080		C-CAP,U 0.47U-16 F Z	C309	87-A10-031-080		C-CAP,U 0.01-25 KB
C135	87-A11-056-080		C-CAP,U 1-10 Z F	D201	87-A90-278-080		C-LED,SMI-210VT RED
C136	87-A10-707-080		C-CAP,U 0.47U-16 F Z	JR159	87-016-462-080		C-CAP,S 1-16 F<YH,AH>
C137	87-A10-707-080		C-CAP,U 0.47U-16 F Z				
C138	87-A11-063-080		C-CAP,S 4.7-10 Z F	JR160	87-016-462-080		C-CAP,S 1-16 F<YH,AH>
C139	87-A10-025-080		C-CAP,U 0.22-16Z F	L200	87-003-375-080		C-COIL,1608 10UH K MLF1608
C140	87-A11-062-080		C-CAP,S 2.2-16 Z F	L251	87-A50-352-080		C-COIL, 100UH NP 05DB101M
C141	87-A11-063-080		C-CAP,S 4.7-10 Z F	PS261	87-A91-374-080		C-SNSR,PHOTO, NJL5194KN
C142	87-016-317-080		C-CAP,TN 2.2-6.3	PS271	87-A91-374-080		C-SNSR,PHOTO, NJL5194KN
				R103	87-022-279-080		CHIP RES,U 470-1/16W F
				R104	87-022-279-080		CHIP RES,U 470-1/16W F
				R105	87-022-215-080		CHIP RES,U 1K-1/16W F<AE>
				R106	87-022-215-080		CHIP RES,U 1K-1/16W F<AE>
				R107	87-022-243-080		CHIP RES,U 15K-1/16W F
				R108	87-022-243-080		CHIP RES,U 15K-1/16W F
				R109	87-022-292-080		CHIP RES U 330K-1/16W F
				R110	87-022-292-080		CHIP RES U 330K-1/16W F
				R151	87-022-252-080		CHIP RES,U 36K-1/16W F<AE>
				R214	87-022-243-080		CHIP RES,U 15K-1/16W F
				R215	87-022-243-080		CHIP RES,U 15K-1/16W F
				S101	8Z-HK4-606-010		SW,LEAF 7ZM-1
				S201	87-036-379-180		C-SW,SL 1-1-2 SS-350-A12B-C-T
				S202	87-036-379-180		C-SW,SL 1-1-2 SS-350-A12B-C-T
				S207	87-A90-698-080		C-SWICH PUSH 1-1-1 PS-170-AT

REF.NO.	PARTNO.	KANRI NO.	DESCRIPTION
S207	87-A90-698-080		C-SWICH PUSH 1-1-1 PS-170-AT
S209	8Z-HK4-607-010		SW,LID 7ZM-1
SFR301	87-A91-011-080		C-SFR,6.8K RH03APA
VR101	87-024-686-080		C-VR,20KAX2 DIA14
X201	87-A70-151-110		VIB,XTAL 32.768KHZ VT

JACK C.B

J101	85-HK3-605-010	JACK,DIA3.5 ST 5P
------	----------------	-------------------

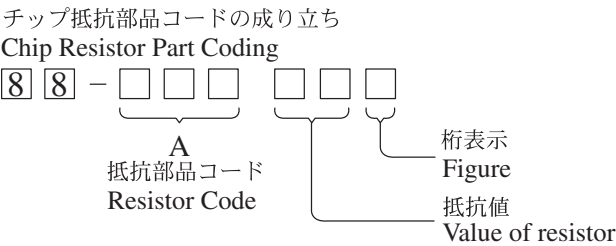
SW C.B

S203	87-A90-665-180	C-SW,TACT LS7A2M
S204	87-A90-665-180	C-SW,TACT LS7A2M
S205	87-A90-665-180	C-SW,TACT LS7A2M
S206	87-A90-665-180	C-SW,TACT LS7A2M

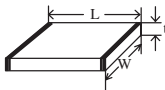
HEAD FLEX C.B

PH1	87-ZM1-601-010	HEAD ASSY, 7ZM-1
-----	----------------	------------------

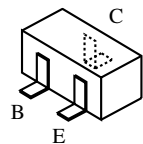
○チップ抵抗部品コード／CHIP RESISTOR PART CODE



チップ抵抗
Chip resistor

容量 Wattage	種類 Type	許容誤差 Tolerance	記号 Symbol	寸法／Dimensions (mm)				抵抗コード : A
				外形／Form	L	W	t	Resistor Code : A
1/16W	1005	± 5%	CJ		1.0	0.5	0.35	104
1/16W	1608	± 5%	CJ		1.6	0.8	0.45	108
1/10W	2125	± 5%	CJ		2	1.25	0.45	118
1/8W	3216	± 5%	CJ		3.2	1.6	0.55	128

TRANSISTOR ILLUSTRATION



RN1310

2SC3326B

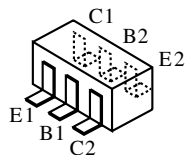
RN1311

2SC4213B

2SA1362

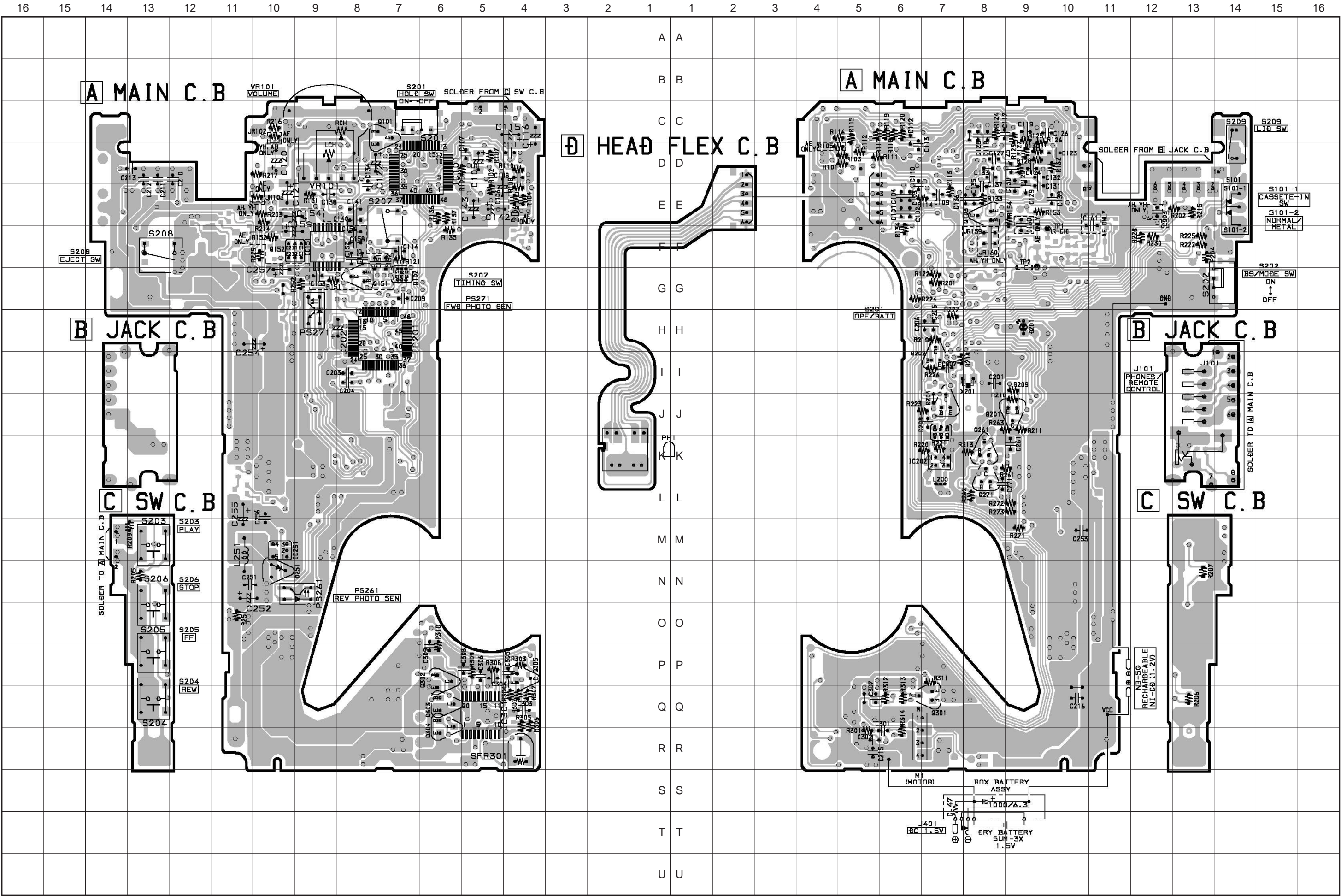
CSA1362

2SC4116

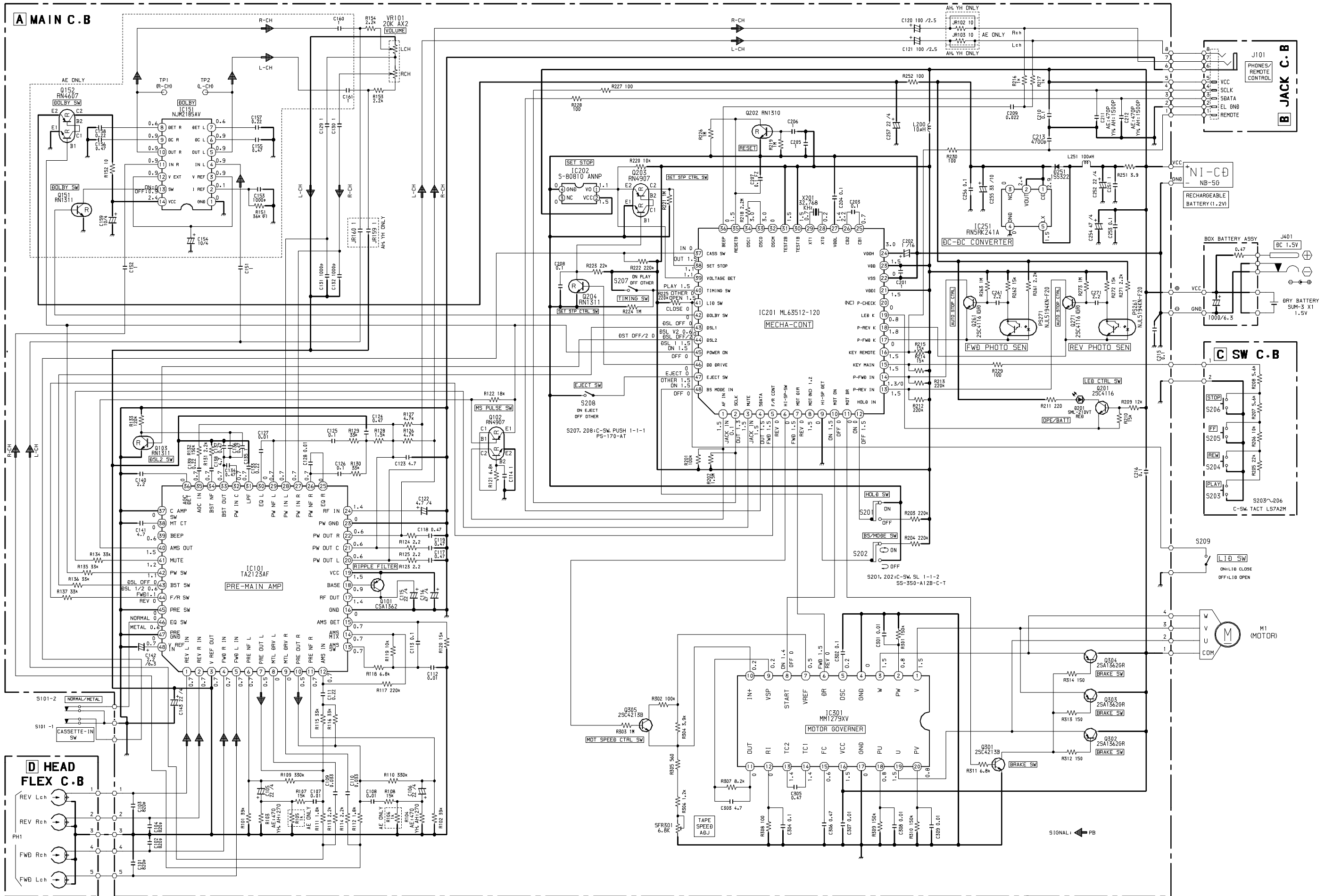


RN4607

RN4907

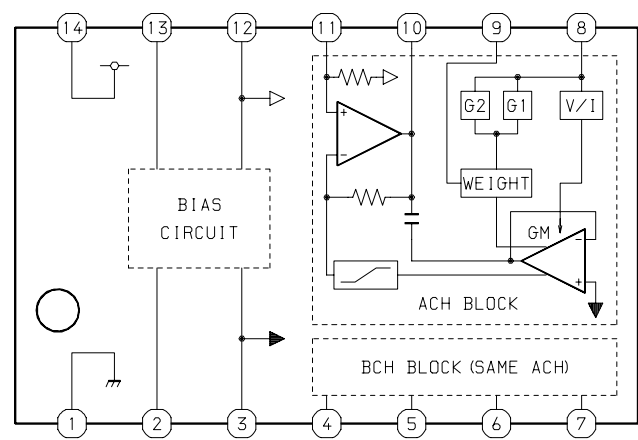


SCHEMATIC DIAGRAM

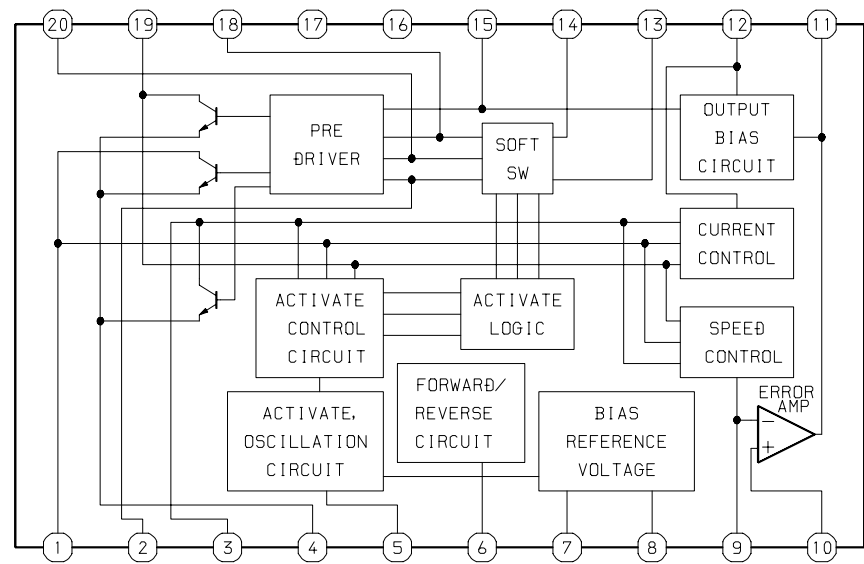


IC BLOCK DIAGRAM

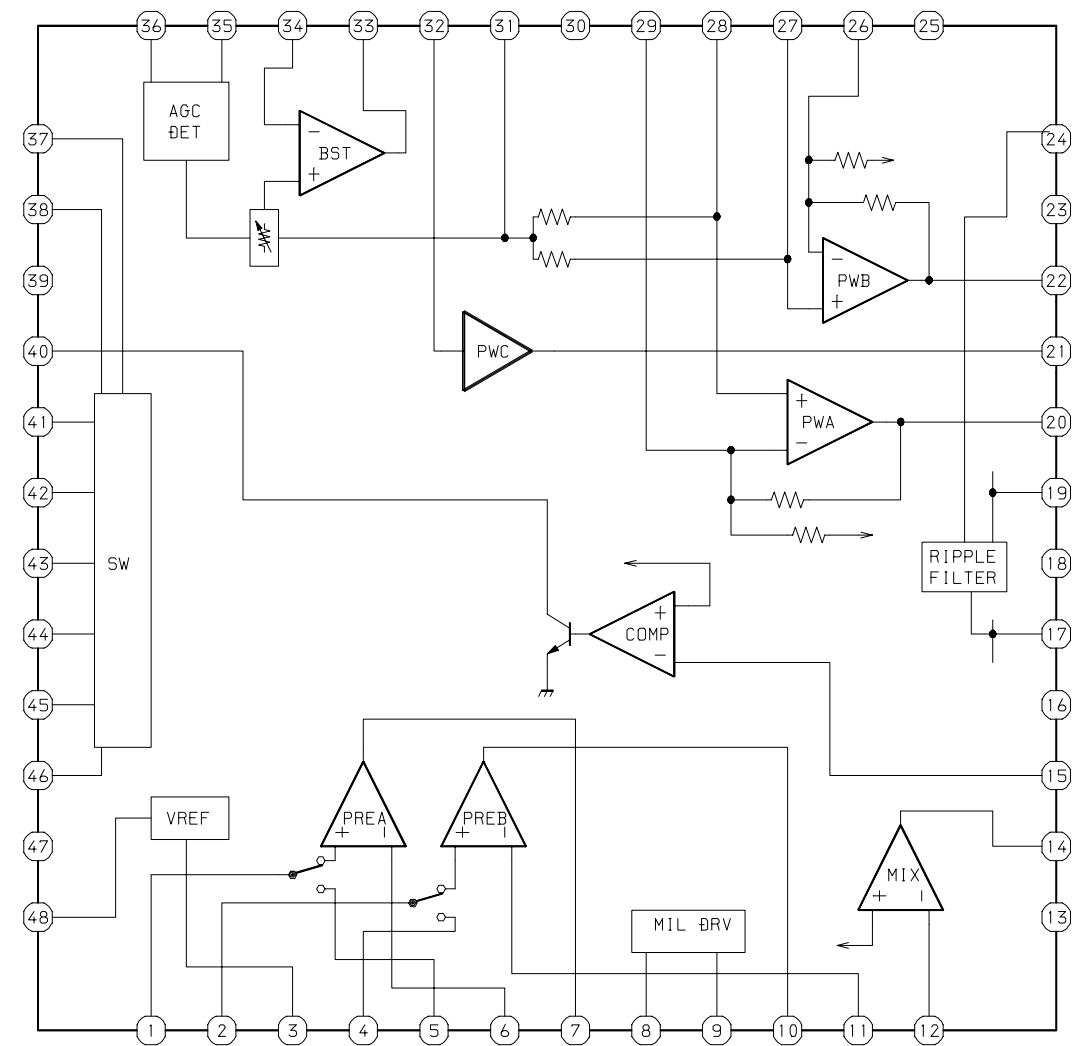
IC, NJM2185AV



IC, MM1279XV



IC, TA2123AF



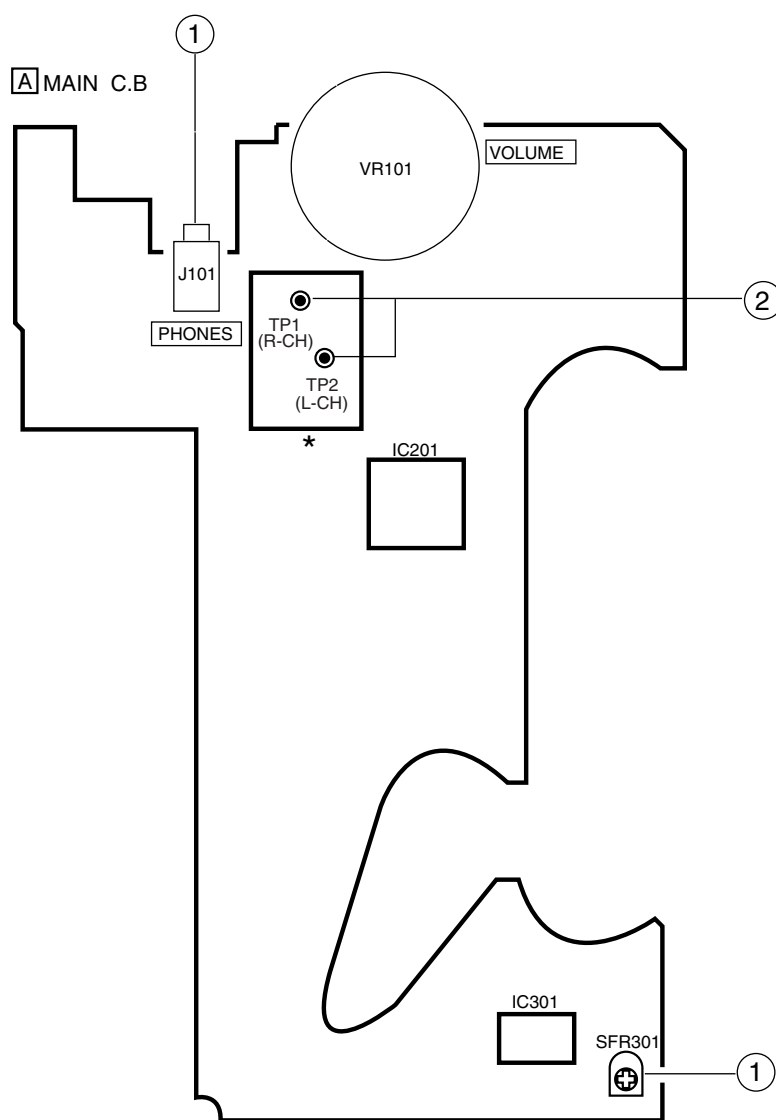
IC DESCRIPTION

IC, ML63512-120

Pin No.	Pin Name	I/O	Description
1	AF IN	I	‘H’: Exist music, ‘L’: Not exist music.
2	SCLK	I	Serial clock input terminal.
3	MUTE	O	‘H’: MUTE OFF, ‘L’: MUTE ON.
4	SDATA	O	Serial data output terminal.
5	F/R CONT	O	‘H’: FWD direction, ‘L’: REV direction.
6	HI-SP-SW	O	‘H’: Motor HI speed.
7	MOT DIR	O	‘H’: Motor counterclockwise (FWD), ‘L’: Motor clockwise (REV).
8	MOTOR 1. 2	O	Motor normal speed. (Not connected)
9	HI-SP DET	I	‘H’: No exist DD drive output, ‘L’: Exist DD drive output.
10	MOT ON	O	‘H’: Motor ON, ‘L’: Motor OFF.
11	MOT BR	O	‘H’: Motor brake ON, ‘L’: Motor brake OFF.
12	HOLD IN	I	‘H’: Hold OFF, ‘L’: Hold ON.
13	P-REV IN	I	Photo sensor input terminal (REV side).
14	P-FWD IN	I	Photo sensor input terminal (FWD side).
15	KEY MAIN	I	Key input terminal (Main unit).
16	KEY REMOTE	I	Key input terminal (Remote controller).
17	P-FWD K	O	Output for photo sensor control (FWD side).
18	P-REV K	O	Output for photo sensor control (REV side).
19	LED K	O	OPE battery LED control output.
20	P-CHECK (NC)	O	Photo sensor puls checking output. (Not connected)
21	VDDI	-	Interface power supply terminal for external equipment.
22	VSS	-	Negative power supply terminal.
23	VDD	-	Positive power supply terminal.
24	VDDH	-	Boost power supply for backup.
25 ~ 26	CB1 ~ CB2	-	Connected to power supply booster capacitor.
27	VDDL	-	Positive power supply for internal logic circuit.
28 ~ 29	XT0 ~ XT1	-	Clock oscillator terminals (Low speed side). Connected to 32.768 kHz crystal oscillator.
30 ~ 31	TEST1B ~ TEST2B	-	Test terminals. (Connected to GND).
32	OSCM	-	Connected to capacitor for high speed clock. (Connected to GND).
33 ~ 34	OSC0 ~ OSC1	-	Clock oscillator terminals (high speed side).
35	RESETB	I	Reset input.
36	BEEP	O	Alarm sound output.
37	CASS SW	I	‘H’: Exist cassette, ‘L’: Not exist cassette.
38	SET STOP	I	‘H’: Normal operation, ‘L’: Mechanism stop.
39	VOLTAGE DET	I	Input terminal for control motor speed.
40	TIMING SW	I	Input terminal for detect mechanism operation.
41	LID SW	I	‘H’: Cassette case OPEN, ‘L’: Cassette case CLOSE.
42	DOLBY SW	I	‘H’: Dolby ON, ‘L’: Dolby OFF.
43	DSL1	O	Output: DSL1 OFF, Stop: DSL1 ON.
44	DSL2/EGS	O	‘H’: DSL2/EGS OFF, ‘L’: DSL2/EGS ON.

Pin No.	Pin Name	I/O	Description
45	POWER ON	O	"H" : Power ON, "L" : Power OFF.
46	DD DRIVE	O	Output terminal for control DC-DC converter.
47	EJECT SW	I	Input terminal for detect EJECT operation. "L" : Wait.
48	BS / MODE IN	I	"H" : Continuous playback / BS enable, "L" : Auto reverse playback / BS disable.

ADJUSTMENT



★ : At the other side of the pattern.

1. Tape Speed Adjustment

- Settings :
- Test tape : TTA-100 (Tape center)
 - Test point : PHONES (J101)
 - Adjustment location : SFR301
 - TAPE SELECTOR : NORM
 - VOLUME : MAX

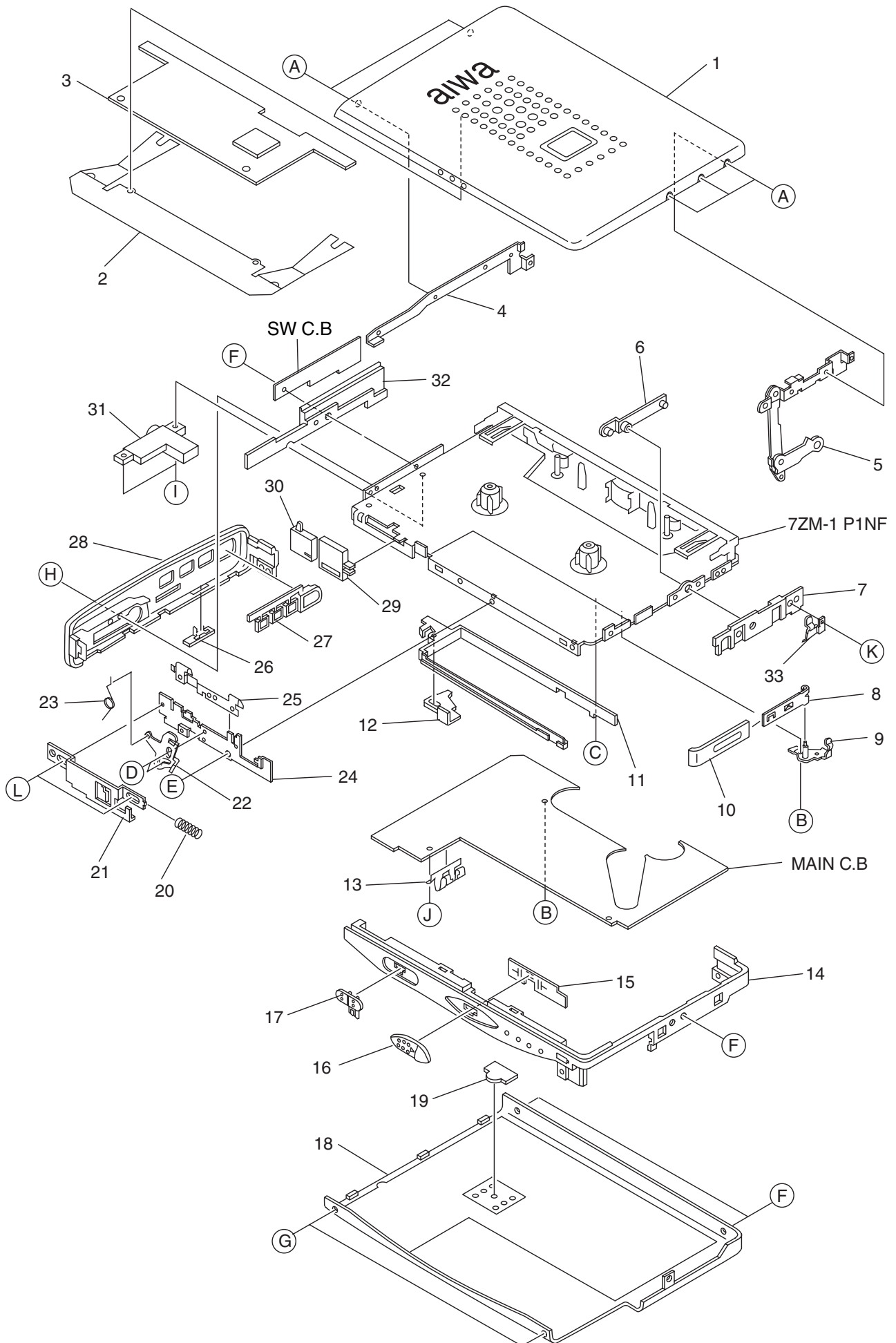
Method : Play back (FWD) the test tape and adjust SFR301 so that the frequency becomes $3015 \text{ Hz} \pm 10 \text{ Hz}$. Then confirm WOW is less than 0.50%.

2. Dolby level check

- Settings :
- Test tape : TTA - 200
 - Test point : Dolby test point TP1(R-CH), TP2(L-CH)
 - DOLBY SW : OFF
 - TAPE SELECTOR : NORM(auto)
 - VOLUME : MIN

Method : Connected an electrolytic capacitor (10uF/16V) to measured equipment and TP1 or TP2, check that the voltage is $32 \text{ mV} \pm 1.0 \text{ dB}$.

MECHANICAL EXPLODED VIEW 1 / 1



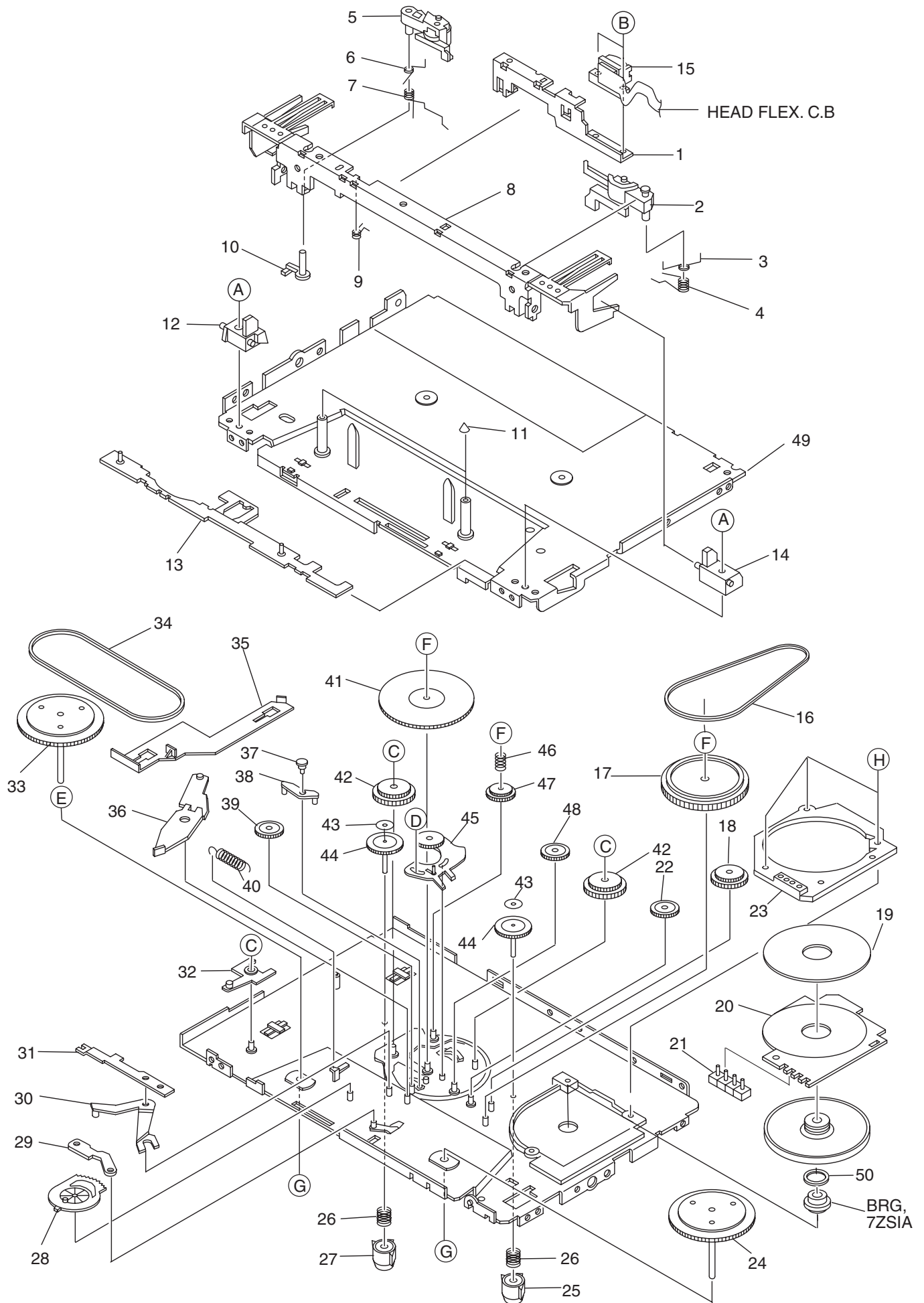
MECHANICAL PARTS LIST 1 / 1

REF.NO.	PARTNO.	KANRI NO.	DESCRIPTION	REF.NO.	PARTNO.	KANRI NO.	DESCRIPTION
1	8Z-HK4-045-010		LID,CASS 2000 ASSY<AH,YH>	24	8Z-HK4-216-010		BASE,LOCK
1	8Z-HK4-052-010		LID,CASS 2000E ASSY<AE>	25	8Z-HK4-221-010		SPR-P,CASS
2	8Z-HK4-228-010		SPR-P,LID	26	8Z-HK4-050-010		KNOB,SL HOLD 2000
3	8Z-HK4-057-010		HLDR,SPR LID	27	8Z-HK4-008-010		KEY,CONT
4	8Z-HK4-205-010		HLDR,LID	28	8Z-HK4-048-010		FRAME,CONT 2000
5	8Z-HK4-206-110		HLDR,ARM ASSY	29	8Z-HK4-606-010		SW,LEAF 7ZM-1
6	8Z-HK4-210-010		NUT, B-BOX	30	8Z-HK4-607-010		SW,LID 7ZM-1
7	8Z-HK4-204-110		HLDR,CONT	31	85-HK3-605-010		JACK,DIA3.5 ST 5P
8	8Z-HK4-212-010		BAT-CONTACT, (+)	32	8Z-HK4-203-010		HLDR,PWB
9	8Z-HK4-229-010		SHAFT,ASSY	33	8Z-HK4-232-010		BAT-CONTACT,BOX(-) S
10	8Z-HK4-007-110		LID,BAT	A	87-HK5-237-010		S-SCREW,1.4-2 CR NL
11	8Z-HK4-201-010		HLDR,BAT	B	87-067-732-010		TAPPING SCREW, VT1.4-3
12	8Z-HK4-215-010		LEVER,EJECT	C	87-067-511-010		SCREW,V+1.4-2 BK
13	8Z-HK4-211-010		BAT-CONTACT, (-)	D	87-078-206-010		S-SCRW,1.4-0.6 B NL
14	8Z-HK4-049-010		FRAME,CTR 2000	E	87-078-183-010		SCRW-SR,1.4-1.4 BL
15	8Z-HK4-225-010		PLATE,KNOB	F	85-HK3-241-010		SCRW-SR,1.4-3CR L
16	8Z-HK4-011-010		KNOB,SL OPEN	G	8Z-HK4-231-010		S-SCREW,SERR+1.4-5.0 SWCH/CR
17	8Z-HK4-051-010		KNOB,SL BLS 2000	H	87-067-429-010		SCREW1.4-2.5
18	8Z-HK4-047-010		CABI,REAR 2000<AH,YH>	I	87-067-480-010		SPECIAL SCREW +1.4-3
18	8Z-HK4-054-010		CABI,REAR 2000E<AE>	J	8Z-HK4-227-010		S-SCREW,SERR+1.4-4.8 SWCH/CR E
19	8Z-HK4-012-010		LENS,LED	K	87-078-153-010		SCRW,1.4-2.5 CR
20	8Z-HK4-230-010		SPR-C,OPEN	L	87-078-108-010		S-SCRW 1.4-0.7 CRNL
21	8Z-HK4-217-010		PLATE,OPEN				
22	8Z-HK4-218-010		PLATE,LOCK				
23	8Z-HK4-219-010		SPR-T,LOCK				

COLOR NAME TABLE

Basic color symbol	Color	Basic color symbol	Color	Basic color symbol	Color
B	Black	C	Cream	D	Orange
G	Green	H	Gray	L	Blue
LT	Transparent Blue	N	Gold	P	Pink
R	Red	S	Silver	ST	Titan Silver
T	Brown	V	Violet	W	White
WT	Transparent White	Y	Yellow	YT	Transparent Yellow
LM	Metallic Blue	LL	Light Blue	GT	Transparent Green
LD	Dark Blue	DT	Transparent Orange	GM	Metallic Green
YM	Metallic Yellow	DM	Metallic Orange		

TAPE MECHANISM EXPLODED VIEW 1 / 1



TAPE MECHANISM PARTS LIST 1 / 1

REF.NO.	PARTNO.	KANRI NO.	DESCRIPTION	REF.NO.	PARTNO.	KANRI NO.	DESCRIPTION
1	87-ZM1-230-010		HLDR,HEAD	31	87-ZM1-265-010		HLDR,CAM
2	87-ZM1-254-110		ARM ASSY,PINCH R	32	87-ZM1-261-010		LEVER,SW
3	87-ZM1-287-010		SPR-T,PINCH BACK R	33	87-ZM1-250-210		FLY-WHL ASSY,R
4	87-ZM1-285-010		SPR-T,PINCH R	34	87-ZM1-272-010		BELT,FLY-WHL
5	87-ZM1-252-110		ARM ASSY,PINCH L	35	87-ZM1-260-010		LEVER,DIR OFF
6	87-ZM1-286-010		SPR-T,PINCH BACK L	36	87-ZM1-231-010		LEVER,CAM CONNECT
7	87-ZM1-284-010		SPR-T,PINCH L	37	87-ZM1-207-010		SHAFT,CONTROL
8	87-ZM1-225-110		HLDR ASSY,CASSET	38	87-ZM1-262-110		LEVER,FR CONTROL
9	87-ZM1-275-010		SPR-T,HEAD BACK	39	87-ZM1-246-010		GEAR,CAM C
10	87-ZM1-269-010		SHAFT,PINCH	40	87-ZM1-282-110		SPR-E,CAM
11	87-ZM1-267-010		CAP,CAPSTAN	41	87-ZM1-237-010		GEAR ASSY,SLIP
12	87-ZM1-263-010		HLDR,CASSET HLD L	42	87-ZM1-241-010		GEAR,IDL A
13	87-ZM1-221-110		LEVER ASSY,DIR	43	87-ZM1-297-010		SH,AUTO 4
14	87-ZM1-264-010		HLDR,CASSET HLD R	44	87-ZM1-236-110		GEAR,REEL
15	87-ZM1-601-010		HEAD ASSY, 7ZM-1	45	87-ZM1-217-010		LEVER ASSY,T-UP
16	87-ZM1-271-010		BELT,MOT	46	87-ZM1-281-010		SPR-C,FR
17	87-ZM1-234-110		GEAR,PULLY	47	87-ZM1-245-010		GEAR,FF/REW
18	87-ZM1-244-010		GEAR,IDL D	48	87-ZM1-242-010		GEAR,IDL B
19	M8-7ZS-191-000		ABL-71 YMB	49	87-ZM1-330-210		CHAS ASSY,OUT-SERT PINF
20	87-ZS1-205-010		COIL,FP 7ZS1A	50	87-ZS1-211-010		MAGNET,PULL 7ZS1A
21	87-ZS1-209-010		PIN ASSY,7ZS1A	A	87-ZM1-273-010		S-SCREW,1.7-5
22	87-ZM1-243-010		GEAR,IDL C	B	87-ZM1-274-010		S-SCREW,HEAD 7ZM-1
23	87-ZS1-210-210		HLDR,7ZS1A	C	87-B10-136-010		W-P,1.09-3.1-0.4
24	87-ZM1-248-410		FLY-WHL ASSY,L	D	87-B10-228-010		W-P,0.95-2-0.2
25	80-ZM4-230-310		REAL CAP,L	E	87-ZM1-292-010		W,1.55-2.62-0.2 SOMA LIGHT
26	85-ZM2-269-010		SPR-C GEAR REEL	F	87-ZM1-291-010		W-P,0.86-3-0.25
27	80-ZM4-231-210		REAL CAP,R	G	87-ZM1-296-010		W-L,1.15-2.6-0.188
28	87-ZM1-232-010		GEAR,CAM	H	87-ZS1-215-010		S-SCREW,VT+1.4-3.5 CR HL
29	87-ZM1-266-210		HLDR,DIR				
30	87-ZM1-268-010		LEVER,CAM 2				

ACCESSORIES / PACKAGE LIST

REF.NO.	PARTNO.	KANRI NO.	DESCRIPTION
1	8Z-HK4-922-010		IB,H(ECC) S 2000<AH>
1	8Z-HK4-923-010		IB,YHS(EC) S <YH>
1	8Z-HK4-925-010		IB,E(5L) S 2000<AE>
1	8Z-HK4-926-010		IB,E(5L) S 2000<AE>
2	87-B30-083-110		CHARGER,RB-107 E<AE>
2	87-B30-341-010		CHARGER,RB-107 H<AH>
3	87-B30-298-010		BAT,NB-5G(S)
4	87-B30-337-010		HEADPHONE,HP-M054
5	8A-HJ2-952-010		CASE,CARRYING BLK
6	8Z-HK4-090-010		BOX,BAT ASSY SIL
7	8Z-HK4-953-010		RC UNIT,RC2000P<AE>
7	8Z-HK4-954-010		RC UNIT,RC2000H<AH,YH>

アイワ株式会社 〒110-8710 東京都台東区池之端1-2-11 ☎03(3827)3111 (代表)
AIWA CO.,LTD. 2-11, IKENOHATA 1-CHOME, TAITO-KU, TOKYO 110, JAPAN TEL:03 (3827) 3111