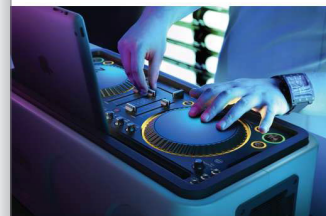




Philips
MIX-DJ sound system

• Dock + Bluetooth®



DS8900

MIX PLAY SHARE

Mix like a DJ, play from any device & share your tunes with Philips MIX-DJ. Create incredible sets that will blow your friends. Dock and play music from your iPod/iPhone/iPad via the Lightning connector or stream songs wirelessly via Bluetooth®. Bring your music out with you for an epic party anywhere.

Exceptional sound performance

- Bluetooth® streaming for unsurpassed sound clarity
- Passive radiator technology for rich yet precise bass without distortion
- Acoustically tuned coaxial drivers for big sound

Take your party everywhere

- Reversible control panel for protection during travel
- Runs on AC as well as D cell batteries
- Hook up to external speakers & amplifiers with an audio out

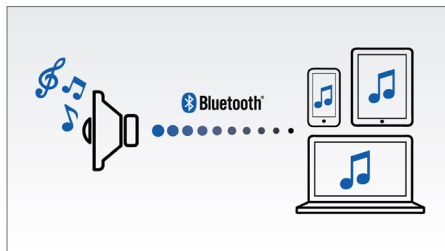
Advanced intuitive control

- Top quality scratch wheels and cross faders
- Instrument grade knobs and sliders
- Seamless Algoriddim's djay 2 app integration

PHILIPS

Highlights

Wireless music streaming



Bluetooth® is a short range wireless communication technology that is both robust and energy-efficient. The technology allows easy wireless connection to iPod/iPhone/iPad or other Bluetooth® devices, such as smartphones, tablets or even laptops. So you can enjoy your favorite music wirelessly on this speaker easily.

Passive radiator technology

Passive radiator technology is a revolutionary



loudspeaker concept that allows you to hear and feel profoundly deep bass that is richer than any other audio system. Special speaker drivers work in harmony with the passive radiator, and precise tuning between the main driver and the tweeter ensures smooth transitions from low-mid to high frequencies. Dual suspension and a totally symmetrical sandwich construction deliver low and precise bass without noticeable distortion. Passive radiator produces exceptionally deep and dynamic bass by using the speaker box full volume to truly magnify the impact of the music.

Reversible control panel



When you aren't mixing or performing, flip the control panel over and use the MIX as a Bluetooth® speaker so you can kick back, relax and listen to your music or throw yourself into the party.

Carrying strap & robust design



Just attach the shoulder strap, sling it over your shoulder and go. The MIX-DJ sound system is also the perfect airline carry-on size so you can bring your skills abroad. Its robust design is tough enough to handle life in one party after another, inside or out, and its controls can be flipped over so they stay protected when you're out and about.

Hook up with an audio out

Connect the MIX-DJ to any external speaker or amplifier using the audio out connection for the power to bring down the house in parties around the world, even without the MIX speakers.

Algoriddim's djay 2 app integration



Dock your iPad with Algoriddim's djay 2 iPad app to make mixing on your iPad as easy as mixing on decks. Use big scratch wheels, crossfaders and deck controls to create mixes from songs in the iPad music library, or let the Automix mode do all the hard work. Intuitively usable and with advanced multi-touch mixing features, Algoriddim's djay 2 app makes mixing easy for everyone from beginners to pros.

Scratch wheels & cross faders



Large tactile and touch sensitive jog wheels feel just like mixing on vinyl and are tailor made for incredible scratch performances

Specifications

iPad compatibility

- via Bluetooth®: iPad, iPad 2, iPad 4, iPad mini
- via Lightning connector: iPad mini, iPad with Retina display

iPhone compatibility

- via Bluetooth®: iPhone 3G, iPhone 3GS, iPhone 4, iPhone 4S, iPhone 5
- via Lightning connector: iPhone 5

iPod compatibility

- via Bluetooth®: iPod nano 7th generation, iPod touch 3rd generation, iPod touch 4th generation, iPod touch 5th generation
- via Lightning connector: iPod nano 7th generation, iPod touch 5th generation

Bluetooth® compatibility

- other Bluetooth®-enabled device
- work with: Bluetooth® 4.0 or below

Sound

- Sound enhancement: Passive radiator technology, bass reflex system, MAX sound
- Output Power: 80W RMS (max)

Loudspeakers

- No. of built-in speakers: 4
- Speakers: Full range woofer and tweeter
- Speaker grille finishing: metal

Connectivity

- Bluetooth® profiles: A2DP, AVRCP
- Bluetooth® range: Line of sight, 10M or 30FT
- Audio in (3.5mm)
- Audio in (6mm)
- Audio out (3.5mm)
- Audio out (6mm)
- Headphone jack: (6mm)

Power

- Power type: AC Input
- Battery type: 8 x D size battery

Accessories

- Cables/Connection: power cord
- Others: User Manual, Quick start guide
- Warranty: Warranty leaflet



Issue date 2013-08-08

Version: 1.0.2

12 NC: 8670 001 06141
EAN: 87 12581 69631 3

© 2013 Koninklijke Philips N.V.
All Rights reserved.

Specifications are subject to change without notice.
Trademarks are the property of Koninklijke Philips N.V. or their respective owners.

www.philips.com